

For Research Use Only

IL-22RA2 Polyclonal antibody

Catalog Number: 22861-1-AP



Basic Information

| | | |
|---|---|--|
| Catalog Number: 22861-1-AP | GenBank Accession Number: BC125167 | Purification Method: Antigen affinity purification |
| Size: 150ul, Concentration: 500 µg/ml by Nanodrop and 327 µg/ml by Bradford method using BSA as the standard; | GeneID (NCBI): 116379 | Recommended Dilutions: WB 1:500-1:1000 IHC 1:50-1:500 |
| Source: Rabbit | Full Name: interleukin 22 receptor, alpha 2 | |
| Isotype: IgG | Calculated MW: 263 aa, 31 kDa | |
| Immunogen Catalog Number: AG18854 | Observed MW: 27 kDa | |

Applications

| | |
|--|--|
| Tested Applications: FC, IHC, WB, ELISA | Positive Controls: WB : MDA-MB-453s cells, IHC : human lung cancer tissue, human breast cancer tissue |
| Species Specificity: human | |
| Note-IHC: suggested antigen retrieval with TE buffer pH 9.0; (*) Alternatively, antigen retrieval may be performed with citrate buffer pH 6.0 | |

Background Information

Interleukin-22 receptor subunit alpha-2 (IL22RA2, also known as CRF2-10) is a soluble member of the type II cytokine receptor family. Through binding to IL22, IL22RA2 prevents the interaction of IL22 with the functional IL22-R complex and blocks the activity of IL22 (in vitro). IL22RA2 may play an important role as an IL22 antagonist in the regulation of inflammatory responses. It has been described that human IL22RA2 gene encodes three alternatively spliced isoforms called CRF2-10L, CRF2-10, and CRF2-10s, with molecular weights of 31 kDa, 27 kDa, and 15 kDa, respectively.

Storage

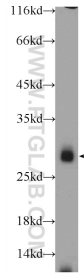
Storage:
Store at -20°C. Stable for one year after shipment.
Storage Buffer:
PBS with 0.02% sodium azide and 50% glycerol pH 7.3.
Aliquoting is unnecessary for -20°C storage

*** 20ul sizes contain 0.1% BSA

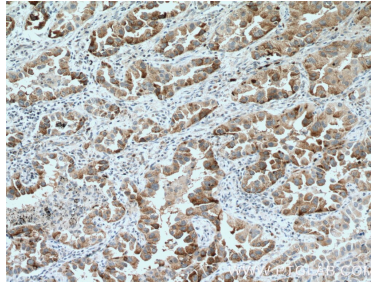
For technical support and original validation data for this product please contact:
T: 1 (888) 4PTGLAB (1-888-478-4522) (toll free in USA), or 1(312) 455-8498 (outside USA) E: proteintech@ptglab.com W: ptglab.com

This product is exclusively available under Proteintech Group brand and is not available to purchase from any other manufacturer.

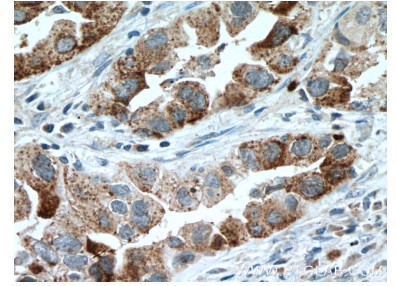
Selected Validation Data



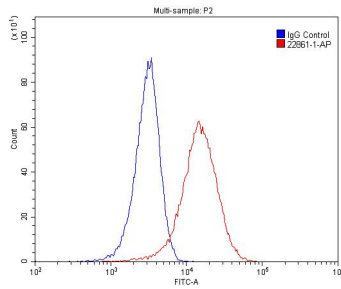
MDA-MB-453s cells were subjected to SDS PAGE followed by western blot with 22861-1-AP (IL22RA2 Antibody) at dilution of 1:600 incubated at room temperature for 1.5 hours.



Immunohistochemical analysis of paraffin-embedded human lung cancer tissue slide using 22861-1-AP (IL22RA2 antibody) at dilution of 1:200 (under 10x lens. Heat mediated antigen retrieval with Tris-EDTA buffer (pH 9.0).



Immunohistochemical analysis of paraffin-embedded human lung cancer tissue slide using 22861-1-AP (IL22RA2 antibody) at dilution of 1:200 (under 40x lens. Heat mediated antigen retrieval with Tris-EDTA buffer (pH 9.0).



1X10⁶ HeLa cells were stained with 0.2ug IL22RA2 antibody (22861-1-AP, red) and control antibody (blue). Alexa Fluor 488-conjugated AffiniPure Goat Anti-Rabbit IgG(H+L) with dilution 1:1500. Cells were fixed with 4% PFA and permeabilized with 0.1% Triton X-100.