

For Research Use Only

SUPT6H Polyclonal antibody

Catalog Number: 23073-1-AP **1 Publications**



Basic Information

| | | |
|--|---|--|
| Catalog Number: 23073-1-AP | GenBank Accession Number: BC136524 | Purification Method: Antigen affinity purification |
| Size: 150ul , Concentration: 500 µg/ml by Nanodrop and 287 µg/ml by Bradford method using BSA as the standard; | GeneID (NCBI): 6830 | Recommended Dilutions: WB 1:500-1:2000 IP 0.5-4.0 ug for IP and 1:500-1:2000 for WB |
| Source: Rabbit | Full Name: suppressor of Ty 6 homolog (S. cerevisiae) | |
| Isotype: IgG | Calculated MW: 1726 aa, 199 kDa | |
| Immunogen Catalog Number: AG19426 | Observed MW: 230 kDa | |

Applications

| | |
|--|---|
| Tested Applications: IP, WB, ELISA | Positive Controls: WB : HeLa cells, HEK-293 cells, Jurkat cells |
| Cited Applications: IP, WB | IP : HEK-293 cells, |
| Species Specificity: human, mouse, rat | |
| Cited Species: human | |

Background Information

SUPT6H (suppressor of Ty6 homolog), also known as SPT6, SPT6H, Tat-CT2 (Tat-cotransactivator 2 protein) or emb-5 in *C. elegans*, is a 1,726 amino acid protein that is highly conserved from yeast to humans. Expressed ubiquitously, SUPT6H localizes to the nucleus and contains one SH2 domain and one S1 domain. SUPT6H participates in both DRB (5,6-dichloro-1-beta-D-ribofuranosylbenzimidazole)-mediated transcriptional inhibition as well as the enhancement of transcriptional elongation by the RNA polymerase II (Pol II). SUPT6H interacts with the nuclear proteins SPT4 and SPT5, which comprise the DSIF (DRB-sensitivity-inducing factor) complex that binds RNA polymerase II, and directly regulates elongation. Via its C-terminus, SUPT6H can also interact with Histone H3. Due to alternative splicing events, three isoforms exist for SUPT6H. This antibody specifically recognizes the 230kd phosphorylated SUPT6H protein.

Notable Publications

| Author | Pubmed ID | Journal | Application |
|--------------|-----------|------------|-------------|
| Roy Matkovic | 35013187 | Nat Commun | WB, IP |

Storage

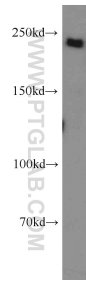
Storage:
Store at -20°C. Stable for one year after shipment.
Storage Buffer:
PBS with 0.02% sodium azide and 50% glycerol pH 7.3.
Aliquoting is unnecessary for -20°C storage

*** 20ul sizes contain 0.1% BSA

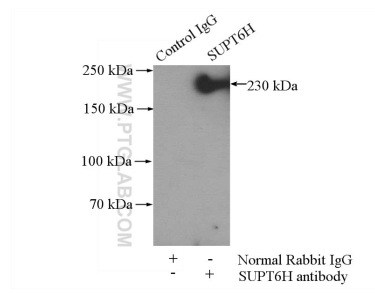
For technical support and original validation data for this product please contact:
T: 1 (888) 4PTGLAB (1-888-478-4522) (toll free in USA), or 1(312) 455-8498 (outside USA)
E: proteintech@ptglab.com
W: ptglab.com

This product is exclusively available under Proteintech Group brand and is not available to purchase from any other manufacturer.

Selected Validation Data



HeLa cells were subjected to SDS PAGE followed by western blot with 23073-1-AP (SUPT6H antibody) at dilution of 1:1000 incubated at room temperature for 1.5 hours.



IP Result of anti-SUPT6H (IP:23073-1-AP, 4ug; Detection:23073-1-AP 1:1000) with HEK-293 cells lysate 1200ug.