

For Research Use Only

# BEND3 Polyclonal antibody

Catalog Number: 23101-1-AP



## Basic Information

<b>Catalog Number:</b> 23101-1-AP	<b>GenBank Accession Number:</b> BC131628	<b>Purification Method:</b> Antigen Affinity purified
<b>Size:</b> 150ul , Concentration: 500 µg/ml by Nanodrop and 300 µg/ml by Bradford method using BSA as the standard;	<b>GeneID (NCBI):</b> 57673	<b>Recommended Dilutions:</b> WB 1:500-1:2000 IHC 1:50-1:500 IF 1:400-1:1600
<b>Source:</b> Rabbit	<b>Full Name:</b> BEN domain containing 3	
<b>Isotype:</b> IgG	<b>Calculated MW:</b> 828 aa, 94 kDa	
<b>Immunogen Catalog Number:</b> AG19137	<b>Observed MW:</b> 94 kDa	

## Applications

<b>Tested Applications:</b> IF, IHC, WB, ELISA	<b>Positive Controls:</b> WB : HEK-293 cells, IHC : human liver cancer tissue, IF : HEK-293 cells,
<b>Species Specificity:</b> human	
<b>Note-IHC: suggested antigen retrieval with TE buffer pH 9.0; (*) Alternatively, antigen retrieval may be performed with citrate buffer pH 6.0</b>	

## Background Information

BEND3 is a quadruple BEN domain-containing protein that associates with heterochromatin and functions as a transcriptional repressor. BEND3 is highly expressed in pluripotent cells, and the induction of differentiation results in the down-regulation of BEND3. (PMID: 35217604, PMID: 25600804)

## Storage

**Storage:**  
Store at -20°C. Stable for one year after shipment.  
**Storage Buffer:**  
PBS with 0.02% sodium azide and 50% glycerol pH 7.3.  
Aliquoting is unnecessary for -20°C storage

\*\*\* 20ul sizes contain 0.1% BSA

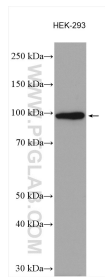
For technical support and original validation data for this product please contact:

T: 1 (888) 4PTGLAB (1-888-478-4522) (toll free in USA), or 1(312) 455-8498 (outside USA)

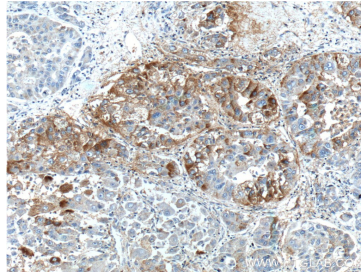
E: [proteintech@ptglab.com](mailto:proteintech@ptglab.com)  
W: [ptglab.com](http://ptglab.com)

This product is exclusively available under Proteintech Group brand and is not available to purchase from any other manufacturer.

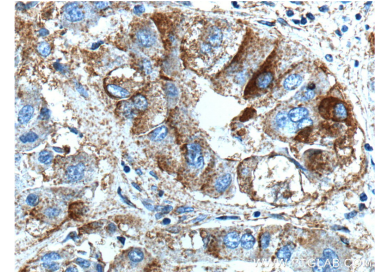
## Selected Validation Data



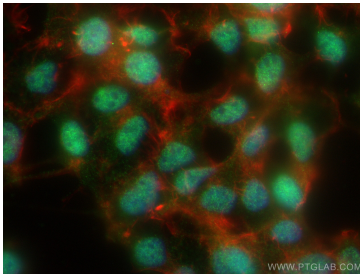
HEK-293 cells were subjected to SDS PAGE followed by western blot with 23101-1-AP (BEND3 antibody) at dilution of 1:1000 incubated at room temperature for 1.5 hours.



Immunohistochemical analysis of paraffin-embedded human liver cancer tissue slide using 23101-1-AP (BEND3 Antibody) at dilution of 1:200 (under 10x lens).



Immunohistochemical analysis of paraffin-embedded human liver cancer tissue slide using 23101-1-AP (BEND3 Antibody) at dilution of 1:200 (under 40x lens).



Immunofluorescent analysis of (4% PFA) fixed HEK-293 cells using BEND3 antibody (23101-1-AP) at dilution of 1:800 and CoraLite®488-Conjugated AffiniPure Goat Anti-Rabbit IgG(H+L), CL594-phalloidin (red).