

ZGPAT Polyclonal antibody

Catalog Number: 23203-1-AP

Basic Information

Catalog Number: 23203-1-AP	GenBank Accession Number: BC032612	Purification Method: Antigen Affinity purified
Size: 150ul , Concentration: 500 µg/ml by Nanodrop and 240 µg/ml by Bradford method using BSA as the standard;	GeneID (NCBI): 84619	Recommended Dilutions: WB 1:500-1:2000
Source: Rabbit	Full Name: zinc finger, CCCH-type with G patch domain	
Isotype: IgG	Calculated MW: 531 aa, 57 kDa	
Immunogen Catalog Number: AG19620	Observed MW: 65 kDa	

Applications

Tested Applications: WB, ELISA	Positive Controls: WB : L02 cells, HepG2 cells, mouse liver tissue
Species Specificity: human, mouse	

Background Information

ZGPAT (Zinc finger CCCH-type with G patch domain-containing protein), also known as zinc finger CCCH domain-containing protein 9 (ZC3HDC9) and G patch domain-containing protein 6 (GPATC6), is a 531 amino acid protein that contains a G-patch domain, which is typically found within RNA-binding proteins. Proteins that contain the G-patch domain include some tumor suppressor and DNA-damage repair proteins. ZGPAT also contains one C3H1-type zinc finger, which further supports its probable role as an RNA-binding protein. The gene encoding ZGPAT is inactivated via differential methylation in a oligodendroglioma cell line, suggesting that ZGPAT may have utility as a biomarker. There are several isoforms of ZGPAT that are produced as a result of alternative splicing events.

Storage

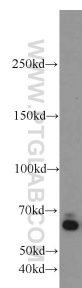
Storage:
Store at -20°C. Stable for one year after shipment.
Storage Buffer:
PBS with 0.02% sodium azide and 50% glycerol pH 7.3.
Aliquoting is unnecessary for -20°C storage

*** 20ul sizes contain 0.1% BSA

For technical support and original validation data for this product please contact:
T: 1 (888) 4PTGLAB (1-888-478-4522) (toll free in USA), or 1(312) 455-8498 (outside USA)
E: proteintech@ptglab.com
W: ptglab.com

This product is exclusively available under Proteintech Group brand and is not available to purchase from any other manufacturer.

Selected Validation Data



L02 cells were subjected to SDS PAGE followed by western blot with 23203-1-AP (ZGPAT antibody) at dilution of 1:1000 incubated at room temperature for 1.5 hours.