

For Research Use Only

Retinal S antigen Polyclonal antibody

Catalog Number: 23546-1-AP



Basic Information

Catalog Number: 23546-1-AP	GenBank Accession Number: BC156656	Purification Method: Antigen affinity purification
Size: 150ul , Concentration: 650 µg/ml by Nanodrop and 520 µg/ml by Bradford method using BSA as the standard;	GeneID (NCBI): 6295	Recommended Dilutions: WB 1:500-1:1000
Source: Rabbit	Full Name: S-antigen; retina and pineal gland (arrestin)	
Isotype: IgG	Calculated MW: 405 aa, 45 kDa	
Immunogen Catalog Number: AG20318	Observed MW: 45 kDa	

Applications

Tested Applications: WB, ELISA	Positive Controls: WB : mouse eye tissue,
Species Specificity: human, mouse	

Background Information

Storage

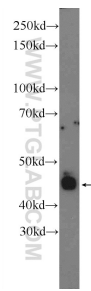
Storage:
Store at -20°C. Stable for one year after shipment.
Storage Buffer:
PBS with 0.02% sodium azide and 50% glycerol pH 7.3.
Aliquoting is unnecessary for -20°C storage

*** 20ul sizes contain 0.1% BSA

For technical support and original validation data for this product please contact:
T: 1 (888) 4PTGLAB (1-888-478-4522) (toll free in USA), or 1(312) 455-8498 (outside USA)
E: proteintech@ptglab.com
W: ptglab.com

This product is exclusively available under Proteintech Group brand and is not available to purchase from any other manufacturer.

Selected Validation Data



mouse eye tissue were subjected to SDS PAGE followed by western blot with 23546-1-AP (Retinal S antigen antibody at dilution of 1:600 incubated at room temperature for 1.5 hours.