

For Research Use Only

# CTGF Polyclonal antibody

Catalog Number: 23903-1-AP

8 Publications



## Basic Information

### Catalog Number:

23903-1-AP

### Size:

150ul, Concentration: 193 µg/ml by Bradford method using BSA as the standard;

### Source:

Rabbit

### Isotype:

IgG

### Immunogen Catalog Number:

AG20985

### GenBank Accession Number:

BC087839

### GeneID (NCBI):

1490

### Full Name:

connective tissue growth factor

### Calculated MW:

349 aa, 38 kDa

### Purification Method:

Antigen affinity purification

### Recommended Dilutions:

WB 1:500-1:2000

IP 0.5-4.0 µg for IP and 1:500-1:2000

for WB

IHC 1:20-1:200

## Applications

### Tested Applications:

IHC, IP, WB, ELISA

### Cited Applications:

IF, IHC, WB

### Species Specificity:

human

### Cited Species:

human, rat, mouse

### Positive Controls:

WB: mouse heart tissue, mouse brain tissue, mouse kidney tissue

IP: mouse brain tissue,

IHC: human colon cancer tissue, human heart tissue, human nephroblastoma tissue

**Note-IHC: suggested antigen retrieval with TE buffer pH 9.0; (\*) Alternatively, antigen retrieval may be performed with citrate buffer pH 6.0**

## Background Information

CTGF, also known as CCN2, is a member of the CCN family of matricellular proteins. CTGF, a cysteine-rich, matrix-associated, heparin-binding protein, is widely expressed in various human tissues and organs. CTGF has important roles in many biological processes, including cell adhesion, migration, proliferation, angiogenesis, skeletal development, and tissue wound repair, and is critically involved in fibrotic disease and several forms of cancers. In western blotting, there are three different forms of CTGF reported: monomeric forms at approximately 36-38 kDa, homodimeric forms at approximately 70 kDa, and lower molecular mass fragment forms.

## Notable Publications

Author	Pubmed ID	Journal	Application
Kai Yang	27942222	Onco Targets Ther	WB
Xinliang Zou	35900670	J Cardiovasc Transl Res	WB, IHC
Shigehisa Aoki	30406776	Biomater Sci	WB, IHC

## Storage

### Storage:

Store at -20°C. Stable for one year after shipment.

### Storage Buffer:

PBS with 0.02% sodium azide and 50% glycerol pH 7.3.

Aliquoting is unnecessary for -20°C storage

\*\*\* 20ul sizes contain 0.1% BSA

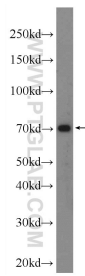
For technical support and original validation data for this product please contact:

T: 1 (888) 4PTGLAB (1-888-478-4522) (toll free in USA), or 1(312) 455-8498 (outside USA)

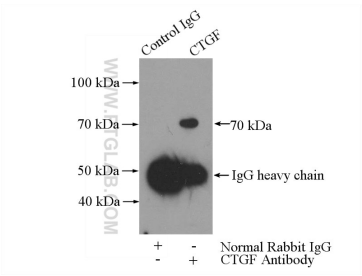
E: [proteintech@ptglab.com](mailto:proteintech@ptglab.com)  
W: [ptglab.com](http://ptglab.com)

This product is exclusively available under Proteintech Group brand and is not available to purchase from any other manufacturer.

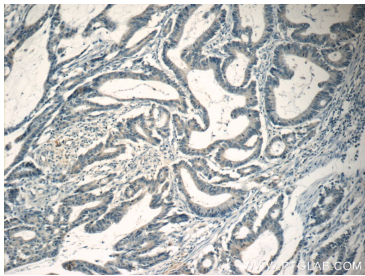
Selected Validation Data



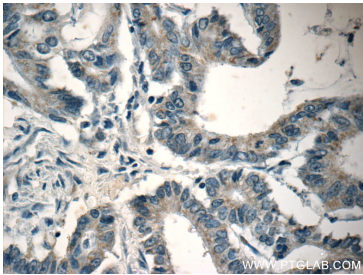
mouse heart tissue were subjected to SDS PAGE followed by western blot with 23903-1-AP (CTGF Antibody) at dilution of 1:1000 incubated at room temperature for 1.5 hours.



IP Result of anti-CTGF (IP:23903-1-AP, 5ug; Detection:23903-1-AP 1:1000) with mouse brain tissue lysate 2640ug.



Immunohistochemical analysis of paraffin-embedded human colon cancer tissue slide using 23903-1-AP (CTGF Antibody) at dilution of 1:50 (under 10x lens).



Immunohistochemical analysis of paraffin-embedded human colon cancer tissue slide using 23903-1-AP (CTGF Antibody) at dilution of 1:50 (under 40x lens).