

For Research Use Only

# CMC1 Polyclonal antibody

Catalog Number: 24030-1-AP **1 Publications**



## Basic Information

<b>Catalog Number:</b> 24030-1-AP	<b>GenBank Accession Number:</b> BC052644	<b>Purification Method:</b> Antigen affinity purification
<b>Size:</b> 150ul , Concentration: 1500 µg/ml by Nanodrop and 693 µg/ml by Bradford method using BSA as the standard;	<b>GeneID (NCBI):</b> 152100	<b>Recommended Dilutions:</b> WB 1:2000-1:12000 IP 0.5-4.0 ug for IP and 1:150-1:600 for WB
<b>Source:</b> Rabbit	<b>Full Name:</b> COX assembly mitochondrial protein homolog (S. cerevisiae)	<b>IHC 1:50-1:500</b>
<b>Isotype:</b> IgG	<b>Calculated MW:</b> 106 aa, 12 kDa	
<b>Immunogen Catalog Number:</b> AG21224	<b>Observed MW:</b> 12-15 kDa	

## Applications

<b>Tested Applications:</b> IHC, IP, WB, ELISA	<b>Positive Controls:</b> WB : K-562 cells, mouse liver tissue
<b>Cited Applications:</b> WB	<b>IP :</b> K-562 cells,
<b>Species Specificity:</b> human, mouse	<b>IHC :</b> human liver cancer tissue,
<b>Cited Species:</b> human	

**Note-IHC: suggested antigen retrieval with TE buffer pH 9.0; (\*) Alternatively, antigen retrieval may be performed with citrate buffer pH 6.0**

## Background Information

### Notable Publications

Author	Pubmed ID	Journal	Application
Bixian Luo	36505872	Front Oncol	WB

## Storage

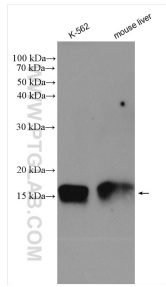
**Storage:**  
Store at -20°C. Stable for one year after shipment.  
**Storage Buffer:**  
PBS with 0.02% sodium azide and 50% glycerol pH 7.3.  
Aliquoting is unnecessary for -20°C storage

\*\*\* 20ul sizes contain 0.1% BSA

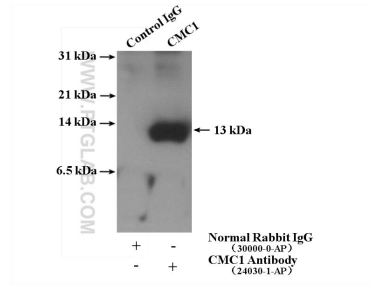
For technical support and original validation data for this product please contact:  
T: 1 (888) 4PTGLAB (1-888-478-4522) (toll free in USA), or 1(312) 455-8498 (outside USA) E: proteintech@ptglab.com W: ptglab.com

This product is exclusively available under Proteintech Group brand and is not available to purchase from any other manufacturer.

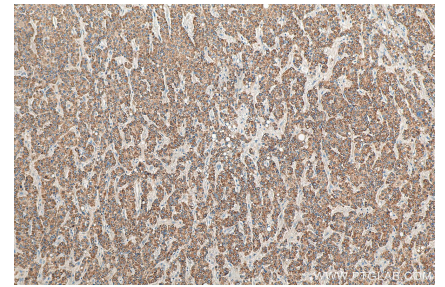
## Selected Validation Data



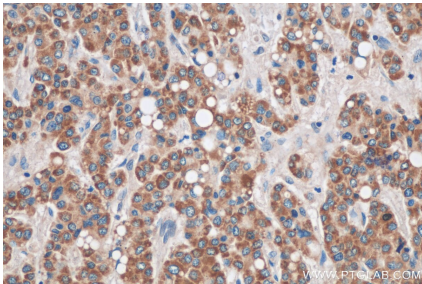
Various lysates were subjected to SDS PAGE followed by western blot with 24030-1-AP (CMC1 antibody) at dilution of 1:6000 incubated at room temperature for 1.5 hours.



IP result of anti-CMC1 (IP:24030-1-AP, 4ug; Detection:24030-1-AP 1:300) with K-562 cells lysate 4000 ug.



Immunohistochemical analysis of paraffin-embedded human liver cancer tissue slide using 24030-1-AP (CMC1 antibody) at dilution of 1:200 (under 10x lens). Heat mediated antigen retrieval with Tris-EDTA buffer (pH 9.0).



Immunohistochemical analysis of paraffin-embedded human liver cancer tissue slide using 24030-1-AP (CMC1 antibody) at dilution of 1:200 (under 40x lens). Heat mediated antigen retrieval with Tris-EDTA buffer (pH 9.0).