

For Research Use Only

# ROMO1 Polyclonal antibody

Catalog Number: 24200-1-AP

Featured Product

5 Publications



## Basic Information

### Catalog Number:

24200-1-AP

### GenBank Accession Number:

BC008488

### Purification Method:

Antigen affinity purification

### Size:

150ul, Concentration: 1000 µg/ml by Nanodrop and 540 µg/ml by Bradford method using BSA as the standard;

### GeneID (NCBI):

140823

### Recommended Dilutions:

WB 1:500-1:1000

IHC 1:50-1:500

### Full Name:

reactive oxygen species modulator 1

### Source:

Rabbit

### Calculated MW:

79 aa, 8 kDa

### Isotype:

IgG

### Immunogen Catalog Number:

AG20368

## Applications

### Tested Applications:

IHC, WB, ELISA

### Positive Controls:

WB : HEK-293 cells,

IHC : human lung cancer tissue, human gliomas tissue

### Cited Applications:

IF, WB

### Species Specificity:

human

### Cited Species:

human, rat, pig

**Note-IHC: suggested antigen retrieval with TE buffer pH 9.0; (\*) Alternatively, antigen retrieval may be performed with citrate buffer pH 6.0**

## Background Information

## Notable Publications

Author	Pubmed ID	Journal	Application
Frank Richter	30598479	J Cell Biol	WB
Dongjie Zhou	34915903	Cell Div	WB,IF
Jiping Yao	38043870	Free Radic Biol Med	WB

## Storage

### Storage:

Store at -20°C. Stable for one year after shipment.

### Storage Buffer:

PBS with 0.02% sodium azide and 50% glycerol pH 7.3.

Aliquoting is unnecessary for -20°C storage

\*\*\* 20ul sizes contain 0.1% BSA

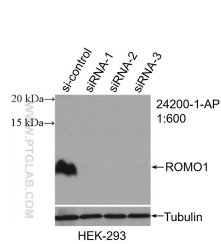
For technical support and original validation data for this product please contact:

T: 1 (888) 4PTGLAB (1-888-478-4522) (toll free in USA), or 1(312) 455-8498 (outside USA)

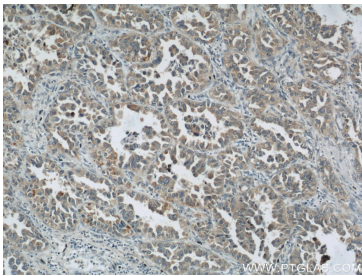
E: [proteintech@ptglab.com](mailto:proteintech@ptglab.com)  
W: [ptglab.com](http://ptglab.com)

This product is exclusively available under Proteintech Group brand and is not available to purchase from any other manufacturer.

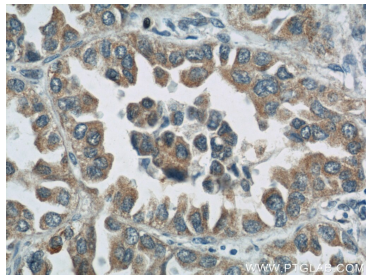
Selected Validation Data



WB result of ROMO1 antibody (24200-1-AP; 1:600; incubated at room temperature for 1.5 hours) with sh-Control and sh-ROMO1 transfected HEK-293 cells.



Immunohistochemical analysis of paraffin-embedded human lung cancer using 24200-1-AP (ROMO1 antibody) at dilution of 1:50 (under 10x lens).



Immunohistochemical analysis of paraffin-embedded human lung cancer using 24200-1-AP (ROMO1 antibody) at dilution of 1:50 (under 40x lens).