

For Research Use Only

# FAM62B Polyclonal antibody

Catalog Number: 24385-1-AP

Featured Product

1 Publications



## Basic Information

<b>Catalog Number:</b> 24385-1-AP	<b>GenBank Accession Number:</b> BC013957	<b>Purification Method:</b> Antigen affinity purification
<b>Size:</b> 150ul , Concentration: 650 µg/ml by Nanodrop and 500 µg/ml by Bradford method using BSA as the standard;	<b>GeneID (NCBI):</b> 57488	<b>Recommended Dilutions:</b> WB 1:2000-1:16000
<b>Source:</b> Rabbit	<b>Full Name:</b> family with sequence similarity 62 (C2 domain containing) member B	
<b>Isotype:</b> IgG	<b>Calculated MW:</b> 921 aa, 102 kDa	
<b>Immunogen Catalog Number:</b> AG20420	<b>Observed MW:</b> 102 kDa	

## Applications

<b>Tested Applications:</b> WB, ELISA	<b>Positive Controls:</b> WB : K-562 cells, HeLa cells, LNCaP cells
<b>Cited Applications:</b> WB	
<b>Species Specificity:</b> human	
<b>Cited Species:</b> human	

## Background Information

### Notable Publications

Author	Pubmed ID	Journal	Application
Arsila P. K. Ashraf	36200035	Front Cell Dev Biol	WB

## Storage

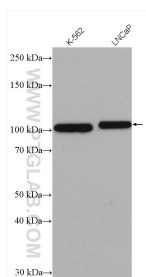
**Storage:**  
Store at -20°C. Stable for one year after shipment.  
**Storage Buffer:**  
PBS with 0.02% sodium azide and 50% glycerol pH 7.3.  
Aliquoting is unnecessary for -20°C storage

\*\*\* 20ul sizes contain 0.1% BSA

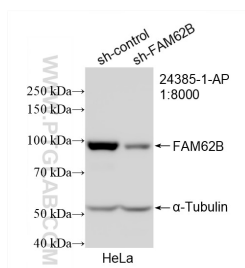
For technical support and original validation data for this product please contact:  
T: 1 (888) 4PTGLAB (1-888-478-4522) (toll free in USA), or 1(312) 455-8498 (outside USA)  
E: [proteintech@ptglab.com](mailto:proteintech@ptglab.com)  
W: [ptglab.com](http://ptglab.com)

This product is exclusively available under Proteintech Group brand and is not available to purchase from any other manufacturer.

## Selected Validation Data



Various lysates were subjected to SDS PAGE followed by western blot with 24385-1-AP (FAM62B antibody) at dilution of 1:8000 incubated at room temperature for 1.5 hours.



WB result of FAM62B antibody (24385-1-AP; 1:8000; incubated at room temperature for 1.5 hours) with sh-Control and sh-FAM62B transfected HeLa cells.