

For Research Use Only

EXOSC9 Polyclonal antibody

Catalog Number: 24470-1-AP

Featured Product

1 Publications



Basic Information

Catalog Number: 24470-1-AP	GenBank Accession Number: BC142978	Purification Method: Antigen affinity purification
Size: 150ul, Concentration: 700 µg/ml by Nanodrop and 267 µg/ml by Bradford method using BSA as the standard;	GeneID (NCBI): 5393	Recommended Dilutions: WB 1:1000-1:6000 IHC 1:50-1:500 IF 1:10-1:100
Source: Rabbit	Full Name: exosome component 9	
Isotype: IgG	Calculated MW: 456 aa, 51 kDa	
Immunogen Catalog Number: AG19768	Observed MW: 65-70 kDa	

Applications

Tested Applications: IF, IHC, WB, ELISA	Positive Controls: WB : HEK-293 cells, MCF-7 cells, HeLa cells, HepG2 cells, NIH/3T3 cells
Cited Applications: WB	IHC : human prostate hyperplasia tissue, mouse kidney tissue
Species Specificity: human, mouse	IF : HeLa cells,
Cited Species: human	

Note-IHC: suggested antigen retrieval with TE buffer pH 9.0; (*) Alternatively, antigen retrieval may be performed with citrate buffer pH 6.0

Background Information

EXOSC9, also named as PMSCL1 and PM/Scl-75, is a key subunit of the exosome complex. EXOSC9 maintains self-renewal in a cell-autonomous manner. EXOSC9 has 4 isoforms with MW 49 kDa, 51 kDa, 39 kDa and 41 kDa. It's polymyositis/scleroderma auto-antigen 75 kDa. The MW of EXOSC9 is migrated to 60-75 kDa for modification in WB detection.

Notable Publications

Author	Pubmed ID	Journal	Application
Tobias Moll	36241425	Life Sci Alliance	WB

Storage

Storage:
Store at -20°C. Stable for one year after shipment.
Storage Buffer:
PBS with 0.02% sodium azide and 50% glycerol pH 7.3.
Aliquoting is unnecessary for -20°C storage

*** 20ul sizes contain 0.1% BSA

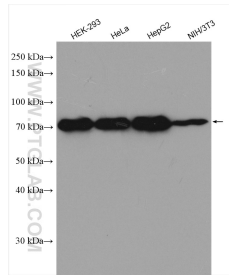
For technical support and original validation data for this product please contact:

T: 1 (888) 4PTGLAB (1-888-478-4522) (toll free in USA), or 1(312) 455-8498 (outside USA)

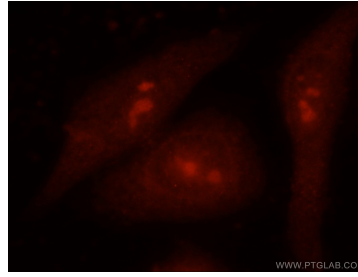
E: proteintech@ptglab.com
W: ptglab.com

This product is exclusively available under Proteintech Group brand and is not available to purchase from any other manufacturer.

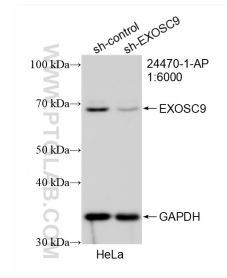
Selected Validation Data



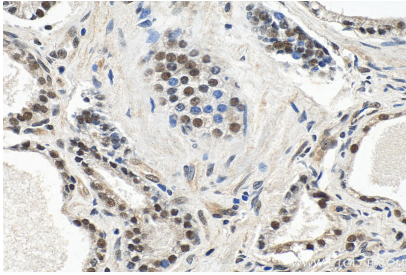
Various lysates were subjected to SDS PAGE followed by western blot with 24470-1-AP (EXOSC9 antibody) at dilution of 1:3000 incubated at room temperature for 1.5 hours.



Immunofluorescent analysis of HeLa cells using 24470-1-AP (EXOSC9 antibody) at dilution of 1:25 and Rhodamine-Goat anti-Rabbit IgG.



WB result of EXOSC9 antibody (24470-1-AP; 1:6000; incubated at room temperature for 1.5 hours) with sh-Control and sh-EXOSC9 transfected HeLa cells.



Immunohistochemical analysis of paraffin-embedded human prostate hyperplasia tissue slide using 24470-1-AP (EXOSC9 antibody) at dilution of 1:200 (under 40x lens).