

For Research Use Only

# ISG20L2 Polyclonal antibody

Catalog Number: 24639-1-AP

2 Publications



## Basic Information

<b>Catalog Number:</b> 24639-1-AP	<b>GenBank Accession Number:</b> BC000575	<b>Purification Method:</b> Antigen affinity purification
<b>Size:</b> 150ul , Concentration: 1000 µg/ml by Nanodrop and 473 µg/ml by Bradford method using BSA as the standard;	<b>GeneID (NCBI):</b> 81875	<b>Recommended Dilutions:</b> WB 1:1000-1:6000 IP 0.5-4.0 ug for 1.0-3.0 mg of total protein lysate
<b>Source:</b> Rabbit	<b>Full Name:</b> interferon stimulated exonuclease gene 20kDa-like 2	
<b>Isotype:</b> IgG	<b>Calculated MW:</b> 353 aa, 39 kDa	
<b>Immunogen Catalog Number:</b> AG20026	<b>Observed MW:</b> 40 kDa	

## Applications

<b>Tested Applications:</b> IP, WB, ELISA	<b>Positive Controls:</b> WB : HEK-293 cells, IP : HEK-293 cells,
<b>Cited Applications:</b> WB	
<b>Species Specificity:</b> human	
<b>Cited Species:</b> human	

## Background Information

ISG20L2, also named HSD38, is a member of a vertebrate exonucleases family. ISG20L2 is composed of at least two functional domains, one at its N-terminal half allowing intracellular localization and association with the binding partners and the other at its C-terminal half bearing the 3' to 5' exonuclease activity. The molecular weight of ISG20L2 is 39 kDa (PMID: 18065403).

## Notable Publications

Author	Pubmed ID	Journal	Application
Yan Yang	36040812	JCI Insight	WB
Yinliang Ma	38153123	Nucleic Acids Res	WB

## Storage

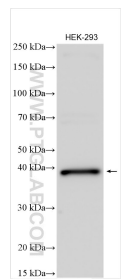
**Storage:**  
Store at -20°C. Stable for one year after shipment.  
**Storage Buffer:**  
PBS with 0.02% sodium azide and 50% glycerol pH 7.3.  
Aliquoting is unnecessary for -20°C storage

\*\*\* 20ul sizes contain 0.1% BSA

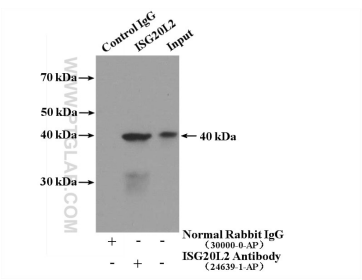
For technical support and original validation data for this product please contact:  
T: 1 (888) 4PTGLAB (1-888-478-4522) (toll free in USA), or 1(312) 455-8498 (outside USA)  
E: [proteintech@ptglab.com](mailto:proteintech@ptglab.com)  
W: [ptglab.com](http://ptglab.com)

This product is exclusively available under Proteintech Group brand and is not available to purchase from any other manufacturer.

## Selected Validation Data



HEK-293 cells were subjected to SDS PAGE followed by western blot with 24639-1-AP (ISG20L2 antibody) at dilution of 1:3000 incubated at room temperature for 1.5 hours.



IP Result of anti-ISG20L2 (IP:24639-1-AP, 4ug; Detection:24639-1-AP 1:1000) with HEK-293 cells lysate 3240ug.