

For Research Use Only

C5orf26 Polyclonal antibody

Catalog Number: 24698-1-AP **3 Publications**



Basic Information

Catalog Number: 24698-1-AP	GenBank Accession Number: BC112077	Purification Method: Antigen affinity purification
Size: 150ul , Concentration: 750 µg/ml by Nanodrop and 447 µg/ml by Bradford method using BSA as the standard;	GeneID (NCBI): 114915	Recommended Dilutions: IHC 1:20-1:200 IF 1:10-1:100
Source: Rabbit	Full Name: chromosome 5 open reading frame 26	
Isotype: IgG	Calculated MW: 120 aa, 13 kDa	
Immunogen Catalog Number: AG20367		

Applications

Tested Applications: IF, IHC, ELISA	Positive Controls: IHC : human liver cancer tissue, human brain tissue IF : HepG2 cells, HeLa cells
Cited Applications: IHC, WB	
Species Specificity: human	
Cited Species: human	

Note-IHC: suggested antigen retrieval with TE buffer pH 9.0; (*) Alternatively, antigen retrieval may be performed with citrate buffer pH 6.0

Background Information

Notable Publications

Author	Pubmed ID	Journal	Application
Yuanchang Zhu	31671345	Mol Ther Nucleic Acids	WB
Weijie Liao	35184403	Clin Transl Med	WB
Meijian Liao	30796006	EBioMedicine	IHC

Storage

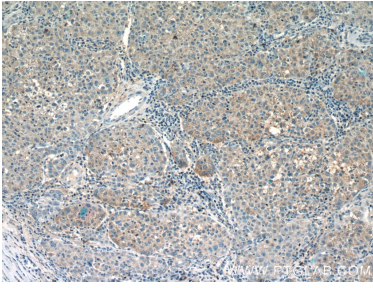
Storage:
Store at -20°C. Stable for one year after shipment.
Storage Buffer:
PBS with 0.02% sodium azide and 50% glycerol pH 7.3.
Aliquoting is unnecessary for -20°C storage

***** 20ul sizes contain 0.1% BSA**

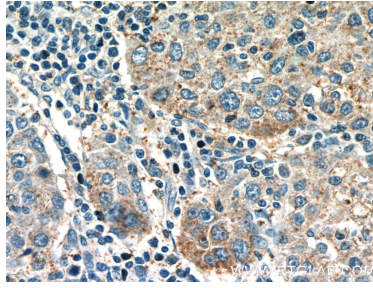
For technical support and original validation data for this product please contact:
T: 1 (888) 4PTGLAB (1-888-478-4522) (toll free in USA), or 1(312) 455-8498 (outside USA) E: proteintech@ptglab.com W: ptglab.com

This product is exclusively available under Proteintech Group brand and is not available to purchase from any other manufacturer.

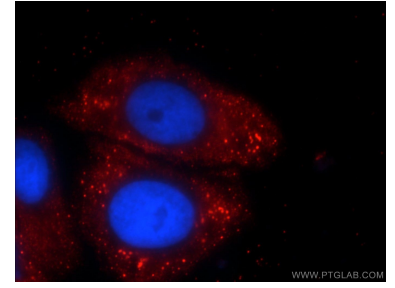
Selected Validation Data



Immunohistochemical analysis of paraffin-embedded human liver cancer slide using 24698-1-AP (C5orf26 Antibody) at dilution of 1:50 (under 10x lens).



Immunohistochemical analysis of paraffin-embedded human liver cancer slide using 24698-1-AP (C5orf26 Antibody) at dilution of 1:50 (under 40x lens).



Immunofluorescent analysis of HepG2 cells using 24698-1-AP (C5orf26 antibody) at dilution of 1:25 and Rhodamine-Goat anti-Rabbit IgG.