

ACE Polyclonal antibody

Catalog Number: 24743-1-AP

19 Publications

Basic Information

Catalog Number:

24743-1-AP

Size:

150ul, Concentration: 600 µg/ml by Nanodrop and 360 µg/ml by Bradford method using BSA as the standard;

Source:

Rabbit

Isotype:

IgG

Immunogen Catalog Number:

AG20654

GenBank Accession Number:

BC036375

GeneID (NCBI):

1636

UNIPROT ID:

P12821

Full Name:

angiotensin I converting enzyme (peptidyl-di-peptidase A) 1

Calculated MW:

150 kDa

Observed MW:

170 kDa

Purification Method:

Antigen affinity purification

Recommended Dilutions:

WB 1:500-1:2000

IP 0.5-4.0 ug for 1.0-3.0 mg of total protein lysate

IHC 1:50-1:500

Applications

Tested Applications:

IHC, IP, WB, ELISA

Cited Applications:

IF, IHC, WB

Species Specificity:

human, mouse, rat

Cited Species:

human, rat, mouse, bovine

Note-IHC: suggested antigen retrieval with TE buffer pH 9.0; (*) Alternatively, antigen retrieval may be performed with citrate buffer pH 6.0

Positive Controls:

WB: mouse heart tissue,

IP: mouse heart tissue,

IHC: human lung tissue, mouse lung tissue

Background Information

ACE (Angiotensin-converting enzyme) is also named as DCP, DCP1 and belongs to the peptidase M2 family. It is involved in catalyzing the conversion of angiotensin I into a physiologically active peptide angiotensin II. ACE also has a glycosidase activity which releases GPI-anchored proteins from the membrane by cleaving the mannose linkage in the GPI moiety. It has 4 isoforms produced by alternative splicing. The full length protein has 15 glycosylation sites and it can show a molecular weight of 170 kDa (PMID:16804085).

Notable Publications

Author	Pubmed ID	Journal	Application
Boyu Yuan	36306919	Arch Biochem Biophys	WB
Donatella Treppiedi	35712238	Front Endocrinol (Lausanne)	IF
Nan Wu	32121598	Antioxidants (Basel)	WB

Storage

Storage:

Store at -20°C. Stable for one year after shipment.

Storage Buffer:

PBS with 0.02% sodium azide and 50% glycerol pH 7.3.

Aliquoting is unnecessary for -20°C storage

*** 20ul sizes contain 0.1% BSA

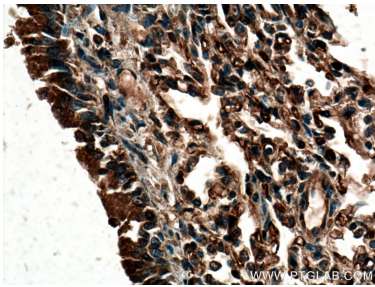
For technical support and original validation data for this product please contact:

T: 1 (888) 4PTGLAB (1-888-478-4522) (toll free in USA), or 1(312) 455-8498 (outside USA)

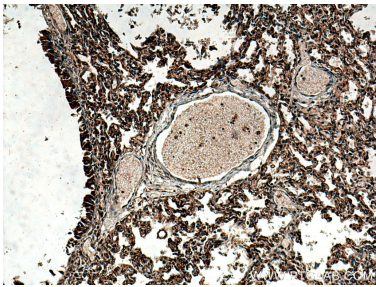
E: proteintech@ptglab.com
W: ptglab.com

This product is exclusively available under Proteintech Group brand and is not available to purchase from any other manufacturer.

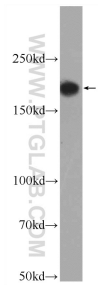
Selected Validation Data



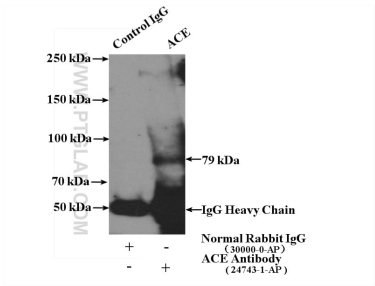
Immunohistochemical analysis of paraffin-embedded human lung tissue slide using 24743-1-AP (ACE antibody) at dilution of 1:200 (under 40x lens). Heat mediated antigen retrieval with Tris-EDTA buffer (pH 9.0).



Immunohistochemical analysis of paraffin-embedded human lung tissue slide using 24743-1-AP (ACE antibody) at dilution of 1:200 (under 10x lens). Heat mediated antigen retrieval with Tris-EDTA buffer (pH 9.0).



mouse heart tissue were subjected to SDS PAGE followed by western blot with 24743-1-AP (ACE Antibody) at dilution of 1:1000 incubated at room temperature for 1.5 hours.



IP result of anti-ACE (IP:24743-1-AP, 4ug; Detection:24743-1-AP 1:1000) with mouse heart tissue lysate 4000ug.