

For Research Use Only

SEC61 Alpha Polyclonal antibody

Catalog Number: 24935-1-AP **2 Publications**



Basic Information

Catalog Number: 24935-1-AP	GenBank Accession Number: BC026179	Purification Method: Antigen affinity purification
Size: 150ul, Concentration: 500 µg/ml by Nanodrop;	GeneID (NCBI): 55176	Recommended Dilutions: WB 1:500-1:1000 IF 1:10-1:100
Source: Rabbit	Full Name: Sec61 alpha 2 subunit (S. cerevisiae)	
Isotype: IgG	Calculated MW: 52 kDa	
Immunogen Catalog Number: AG20779	Observed MW: 52 kDa	

Applications

Tested Applications: IF, WB, ELISA	Positive Controls: WB : mouse brain tissue, HEK-293 cells, U2OS cells, mouse liver tissue IF : HepG2 cells,
Cited Applications: CoIP, IF	
Species Specificity: human, mouse	
Cited Species: human, rat	

Background Information

The SEC61 complex is a major component of the endoplasmic reticulum (ER) translocation site (PMID: 7720858). This complex is composed of three subunits: SEC61alpha, SEC61beta and SEC61gamma. SEC61alpha is a polytopic integral membrane protein. It is a core component of the ER translocation complex, playing a crucial role in the insertion of secretory and membrane polypeptides into the ER (PMID: 9512475).

Notable Publications

Author	Pubmed ID	Journal	Application
Yuan Wang	32524001	Sci Adv	IF
Angela L. Whittsette	35938049	iScience	CoIP

Storage

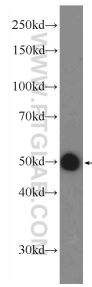
Storage:
Store at -20°C. Stable for one year after shipment.
Storage Buffer:
PBS with 0.02% sodium azide and 50% glycerol pH 7.3.
Aliquoting is unnecessary for -20°C storage

*** 20ul sizes contain 0.1% BSA

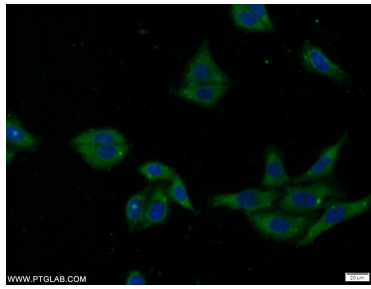
For technical support and original validation data for this product please contact:
T: 1 (888) 4PTGLAB (1-888-478-4522) (toll free in USA), or 1(312) 455-8498 (outside USA)
E: proteintech@ptglab.com
W: ptglab.com

This product is exclusively available under Proteintech Group brand and is not available to purchase from any other manufacturer.

Selected Validation Data



mouse brain tissue were subjected to SDS PAGE followed by western blot with 24935-1-AP (SEC61alpha antibody at dilution of 1:600 incubated at room temperature for 1.5 hours.



Immunofluorescent analysis of HepG2 cells using 24935-1-AP (SEC61alpha antibody) at dilution of 1:25 and Alexa Fluor 488-conjugated AffiniPure Goat Anti-Rabbit IgG(H+L).