

For Research Use Only

C6orf211/ARMT1 Polyclonal antibody



Catalog Number: 25124-1-AP

Featured Product

Basic Information

Catalog Number: 25124-1-AP	GenBank Accession Number: BC011348	Purification Method: Antigen affinity purification
Size: 150ul , Concentration: 400 µg/ml by Nanodrop and 220 µg/ml by Bradford method using BSA as the standard;	GeneID (NCBI): 79624	Recommended Dilutions: WB 1:500-1:2000 IHC 1:20-1:200 IF 1:10-1:100
Source: Rabbit	Full Name: chromosome 6 open reading frame 211	
Isotype: IgG	Calculated MW: 441 aa, 51 kDa	
Immunogen Catalog Number: AG19090	Observed MW: 50-51 kDa	

Applications

Tested Applications:
IF, IHC, WB, ELISA

Species Specificity:
human

Note-IHC: suggested antigen retrieval with TE buffer pH 9.0; (*) Alternatively, antigen retrieval may be performed with citrate buffer pH 6.0

Positive Controls:

WB : MCF-7 cells, HEK-293 cells, A431 cells, T-47D cells

IHC : human testis tissue, human breast cancer tissue

IF : MCF-7 cells,

Background Information

Storage

Storage:
Store at -20°C. Stable for one year after shipment.
Storage Buffer:
PBS with 0.02% sodium azide and 50% glycerol pH 7.3.
Aliquoting is unnecessary for -20°C storage

*** 20ul sizes contain 0.1% BSA

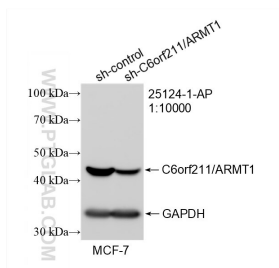
For technical support and original validation data for this product please contact:

T: 1 (888) 4PTGLAB (1-888-478-4522) (toll free in USA), or 1(312) 455-8498 (outside USA)

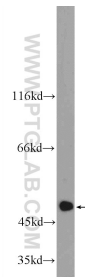
E: proteintech@ptglab.com
W: ptglab.com

This product is exclusively available under Proteintech Group brand and is not available to purchase from any other manufacturer.

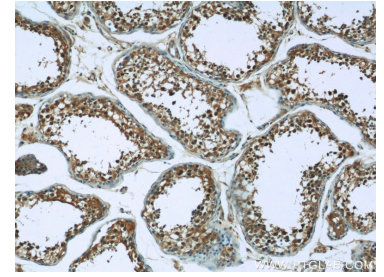
Selected Validation Data



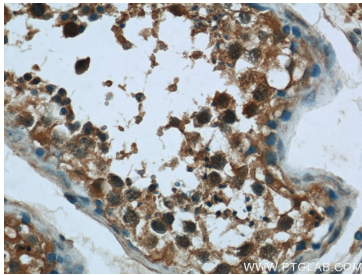
WB result of C6orf211/ARMT1 antibody (25124-1-AP; 1:10000; incubated at room temperature for 1.5 hours) with sh-Control and sh-C6orf211/ARMT1 transfected MCF-7 cells.



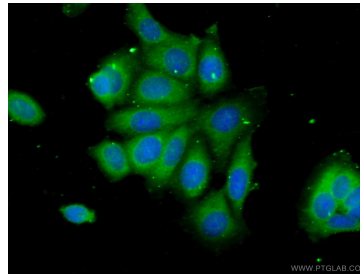
MCF-7 cells were subjected to SDS PAGE followed by western blot with 25124-1-AP (C6orf211 Antibody) at dilution of 1:600 incubated at room temperature for 1.5 hours.



Immunohistochemical analysis of paraffin-embedded human testis tissue slide using 25124-1-AP (C6orf211 Antibody) at dilution of 1:50 (under 10x lens).



Immunohistochemical analysis of paraffin-embedded human testis tissue slide using 25124-1-AP (C6orf211 Antibody) at dilution of 1:50 (under 40x lens).



Immunofluorescent analysis of (-20°C Ethanol) fixed MCF-7 cells using 25124-1-AP (C6orf211 antibody) at dilution of 1:25 and Alexa Fluor 488-conjugated AffiniPure Goat Anti-Rabbit IgG(H+L).