

ALDH1A3 Polyclonal antibody

Catalog Number: 25167-1-AP

Featured Product

16 Publications

Basic Information

Catalog Number: 25167-1-AP	GenBank Accession Number: BC069274	Purification Method: Antigen affinity purification
Size: 150ul, Concentration: 600 µg/ml by Nanodrop;	GeneID (NCBI): 220	Recommended Dilutions: WB 1:500-1:2000 IHC 1:50-1:500 IF 1:20-1:200
Source: Rabbit	Full Name: aldehyde dehydrogenase 1 family, member A3	
Isotype: IgG	Calculated MW: 512 aa, 56 kDa	
Immunogen Catalog Number: AG18605	Observed MW: 50 kDa	

Applications

Tested Applications: IF, IHC, WB, ELISA	Positive Controls:
Cited Applications: IF, IHC, WB	WB: HepG2 cells, mouse liver tissue, rat liver tissue
Species Specificity: human, mouse, rat	IHC: human liver tissue,
Cited Species: human, goat, mouse	IF: HepG2 cells,
Note-IHC: suggested antigen retrieval with TE buffer pH 9.0; (*) Alternatively, antigen retrieval may be performed with citrate buffer pH 6.0	

Background Information

Aldehyde dehydrogenase 1 family member A3 (ALDH1A3), is an aldehyde dehydrogenase enzyme that uses retinal as a substrate either in a free or a cellular retinol-binding protein form. ALDH1A3 plays a major role in the detoxification of aldehydes generated by alcohol metabolism and lipid peroxidation. ALDH1A3 is calculated to be 56 kDa.

Notable Publications

Author	Pubmed ID	Journal	Application
Changmei Yang	34506903	Free Radic Biol Med	WB
Xingxing Xu	29076503	Cell Res	WB
Shoma Tamori	30559934	Oncotarget	WB

Storage

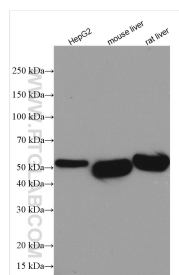
Storage:
Store at -20°C. Stable for one year after shipment.
Storage Buffer:
PBS with 0.02% sodium azide and 50% glycerol pH 7.3.
 Aliquoting is unnecessary for -20°C storage

*** 20ul sizes contain 0.1% BSA

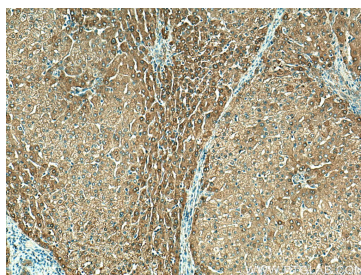
For technical support and original validation data for this product please contact:
 T: 1 (888) 4PTGLAB (1-888-478-4522) (toll free in USA), or 1(312) 455-8498 (outside USA)
 E: proteintech@ptglab.com
 W: ptglab.com

This product is exclusively available under Proteintech Group brand and is not available to purchase from any other manufacturer.

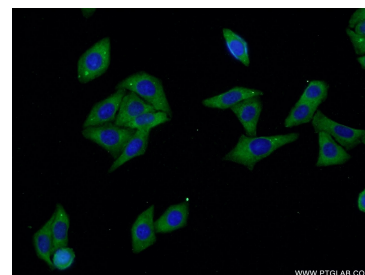
Selected Validation Data



Various lysates were subjected to SDS PAGE followed by western blot with 25167-1-AP (ALDH1A3 antibody) at dilution of 1:1000 incubated at room temperature for 1.5 hours.



Immunohistochemical analysis of paraffin-embedded human liver tissue slide using 25167-1-AP (ALDH1A3 antibody) at dilution of 1:200 (under 10x lens). Heat mediated antigen retrieval with Tris-EDTA buffer (pH 9.0).



Immunofluorescent analysis of HepG2 cells using 25167-1-AP (ALDH1A3 antibody) at dilution of 1:50 and Alexa Fluor 488-conjugated AffiniPure Goat Anti-Rabbit IgG(H+L).