

For Research Use Only

# CPEB4 Polyclonal antibody

Catalog Number: 25342-1-AP **9 Publications**



## Basic Information

<b>Catalog Number:</b> 25342-1-AP	<b>GenBank Accession Number:</b> NM_030627	<b>Purification Method:</b> Antigen affinity purification
<b>Size:</b> 150ul , Concentration: 1200 µg/ml by Nanodrop;	<b>GeneID (NCBI):</b> 80315	<b>Recommended Dilutions:</b> WB 1:500-1:1000 IHC 1:50-1:500 IF 1:50-1:500
<b>Source:</b> Rabbit	<b>UNIPROT ID:</b> Q17RYO	
<b>Isotype:</b> IgG	<b>Full Name:</b> cytoplasmic polyadenylation element binding protein 4	
	<b>Calculated MW:</b> 80 kDa	
	<b>Observed MW:</b> 80 kDa	

## Applications

<b>Tested Applications:</b> IF, IHC, WB, ELISA	<b>Positive Controls:</b> WB : SH-SY5Y cells, A375 cells, HeLa cells
<b>Cited Applications:</b> WB, RIP, IHC	<b>IHC :</b> human liver cancer tissue,
<b>Species Specificity:</b> human, mouse, rat	<b>IF :</b> SH-SY5Y cells,
<b>Cited Species:</b> human, mouse	

**Note-IHC: suggested antigen retrieval with TE buffer pH 9.0; (\*) Alternatively, antigen retrieval may be performed with citrate buffer pH 6.0**

## Background Information

CPEB4 also named as CPE binding protein 4 or hCPEB 4 is a 729 amino acid protein, which contains two RRM domains and belongs to the RRM CPEB family. CPEB4 involves in some forms of synaptic plasticity and regulate translation by binding to regulatory motifs of defined mRNA targets. CPEB1 and CPEB4 are differentially regulated by phase-specific kinases, generating the need of two sequential CPEB activities to sustain cytoplasmic polyadenylation during all the meiotic phases.

## Notable Publications

Author	Pubmed ID	Journal	Application
Kai P Hoefig	34471108	Nat Commun	WB
Rui Shi	35317822	J Transl Med	WB, IHC
Hui Zhang	35195181	Acta Cir Bras	WB

## Storage

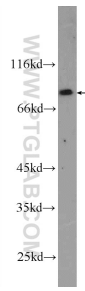
**Storage:**  
Store at -20°C. Stable for one year after shipment.  
**Storage Buffer:**  
PBS with 0.02% sodium azide and 50% glycerol pH 7.3.  
Aliquoting is unnecessary for -20°C storage

\*\*\* 20ul sizes contain 0.1% BSA

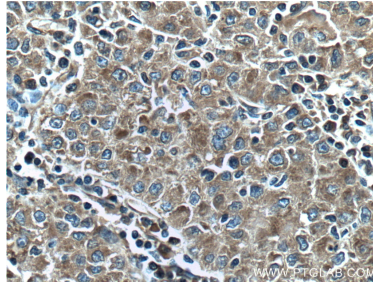
For technical support and original validation data for this product please contact:  
T: 1 (888) 4PTGLAB (1-888-478-4522) (toll free in USA), or 1(312) 455-8498 (outside USA)  
E: proteintech@ptglab.com  
W: ptglab.com

This product is exclusively available under Proteintech Group brand and is not available to purchase from any other manufacturer.

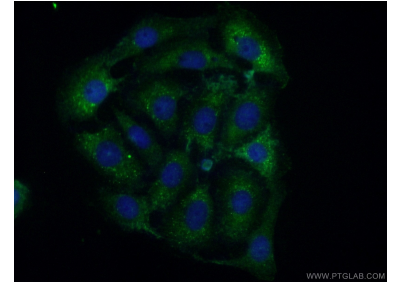
## Selected Validation Data



SH-SY5Y cells were subjected to SDS PAGE followed by western blot with 25342-1-AP (CPEB4 Antibody) at dilution of 1:600 incubated at room temperature for 1.5 hours.



Immunohistochemical analysis of paraffin-embedded human liver cancer tissue slide using 25342-1-AP (CPEB4 Antibody) at dilution of 1:200 (under 40x Lens). Heat mediated antigen retrieval with Tris-EDTA buffer (pH 9.0).



Immunofluorescent analysis of (-20°C Acetone) fixed SH-SY5Y cells using 25342-1-AP (CPEB4 antibody) at dilution of 1:50 and Alexa Fluor 488-conjugated AffiniPure Goat Anti-Rabbit IgG(H+L).