

For Research Use Only

FAM20C Polyclonal antibody

Catalog Number: 25395-1-AP **3 Publications**



Basic Information

Catalog Number: 25395-1-AP	GenBank Accession Number: BC040074	Purification Method: Antigen affinity purification
Size: 150ul , Concentration: 1000 µg/ml by Nanodrop and 360 µg/ml by Bradford method using BSA as the standard;	GeneID (NCBI): 56975	Recommended Dilutions: IHC 1:50-1:500
Source: Rabbit	Full Name: family with sequence similarity 20, member C	
Isotype: IgG	Calculated MW: 584 aa, 66 kDa	
Immunogen Catalog Number: AG22061		

Applications

Tested Applications: IHC, ELISA	Positive Controls: IHC : human kidney tissue, human ovary tissue
Cited Applications: IHC, WB	
Species Specificity: human, mouse, rat	
Cited Species: rat, mouse, monkey	
Note-IHC: suggested antigen retrieval with TE buffer pH 9.0; (*) Alternatively, antigen retrieval may be performed with citrate buffer pH 6.0	

Background Information

FAM20C, also named as Golgi-enriched fraction casein kinase or Dentin matrix protein 4, is a 584 amino acid protein, which belongs to the FAM20 family. FAM20C is widely expressed. FAM20C as a Calcium-binding kinase that phosphorylates the caseins and several secreted proteins implicated in biomineralization, including the secretory calcium binding phosphoproteins (SCPP).

Notable Publications

Author	Pubmed ID	Journal	Application
Elena Tibaldi	31914633	FASEB J	WB,IHC
Toshiyasu Koike	36572689	Nat Commun	WB
Han Xie	37681408	JCI Insight	WB

Storage

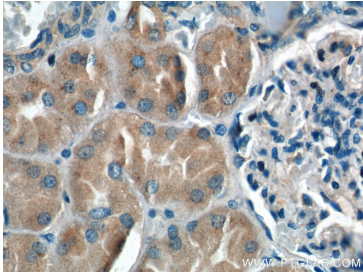
Storage:
Store at -20°C. Stable for one year after shipment.
Storage Buffer:
PBS with 0.02% sodium azide and 50% glycerol pH 7.3.
Aliquoting is unnecessary for -20°C storage

*** 20ul sizes contain 0.1% BSA

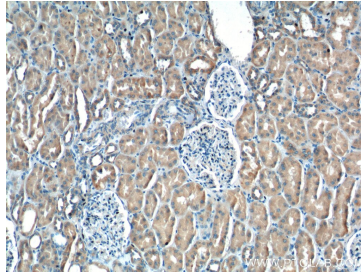
For technical support and original validation data for this product please contact:
T: 1 (888) 4PTGLAB (1-888-478-4522) (toll free in USA), or 1(312) 455-8498 (outside USA)
E: proteintech@ptglab.com
W: ptglab.com

This product is exclusively available under Proteintech Group brand and is not available to purchase from any other manufacturer.

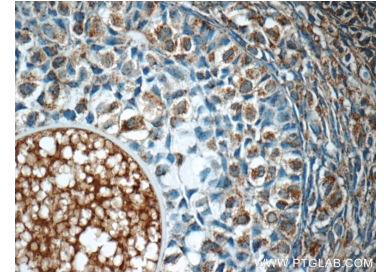
Selected Validation Data



Immunohistochemical analysis of paraffin-embedded human kidney tissue slide using 25395-1-AP (FAM20C Antibody) at dilution of 1:200 (under 40x lens).



Immunohistochemical analysis of paraffin-embedded human kidney tissue slide using 25395-1-AP (FAM20C Antibody) at dilution of 1:200 (under 10x lens).



Immunohistochemical analysis of paraffin-embedded human ovary tissue slide using 25395-1-AP (FAM20C Antibody) at dilution of 1:50 (under 40x lens).