

For Research Use Only

# PPRC1 Polyclonal antibody

Catalog Number: 25429-1-AP

1 Publications



## Basic Information

<b>Catalog Number:</b> 25429-1-AP	<b>GenBank Accession Number:</b> BC063806	<b>Purification Method:</b> Antigen affinity purification
<b>Size:</b> 150ul , Concentration: 500 µg/ml by Nanodrop and 300 µg/ml by Bradford method using BSA as the standard;	<b>GeneID (NCBI):</b> 23082	<b>Recommended Dilutions:</b> WB 1:200-1:1000
<b>Source:</b> Rabbit	<b>Full Name:</b> peroxisome proliferator-activated receptor gamma, coactivator-related 1	
<b>Isotype:</b> IgG	<b>Calculated MW:</b> 1542 aa, 165 kDa	
<b>Immunogen Catalog Number:</b> AG11940	<b>Observed MW:</b> 177 kDa	

## Applications

<b>Tested Applications:</b> WB, ELISA	<b>Positive Controls:</b> WB : NIH/3T3 cells, C6 cells
<b>Cited Applications:</b> WB	
<b>Species Specificity:</b> human, mouse, rat	
<b>Cited Species:</b> human	

## Background Information

Peroxisome proliferator-activated receptor gamma, co-activator-related 1 (Pprc1) is the third member of the Pgc1 family, which contributes to mitochondrial biogenesis and orchestrates response to metabolic stress by promoting the expression of multiple genes specifying inflammation, proliferation, and metabolic reprogramming.

## Notable Publications

Author	Pubmed ID	Journal	Application
Mengjie Zhao	36696363	Cancer Res	WB

## Storage

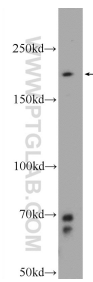
**Storage:**  
Store at -20°C. Stable for one year after shipment.  
**Storage Buffer:**  
PBS with 0.02% sodium azide and 50% glycerol pH 7.3.  
Aliquoting is unnecessary for -20°C storage

\*\*\* 20ul sizes contain 0.1% BSA

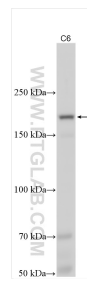
For technical support and original validation data for this product please contact:  
T: 1 (888) 4PTGLAB (1-888-478-4522) (toll free in USA), or 1(312) 455-8498 (outside USA)  
E: proteintech@ptglab.com  
W: ptglab.com

This product is exclusively available under Proteintech Group brand and is not available to purchase from any other manufacturer.

## Selected Validation Data



NIH/3T3 cells were subjected to SDS PAGE followed by western blot with 25429-1-AP (PPRC1 Antibody) at dilution of 1:300 incubated at room temperature for 1.5 hours.



Various lysates were subjected to SDS PAGE followed by western blot with 25429-1-AP (PPRC1 antibody) at dilution of 1:500 incubated at room temperature for 1.5 hours.