

For Research Use Only

# PRDM15 Polyclonal antibody

Catalog Number: 25590-1-AP

Featured Product

1 Publications



## Basic Information

<b>Catalog Number:</b> 25590-1-AP	<b>GenBank Accession Number:</b> BC067102	<b>Purification Method:</b> Antigen affinity purification
<b>Size:</b> 150ul, Concentration: 1000 µg/ml by Nanodrop and 413 µg/ml by Bradford method using BSA as the standard;	<b>GeneID (NCBI):</b> 63977	<b>Recommended Dilutions:</b> WB 1:200-1:1000 IP 0.5-4.0 ug for IP and 1:500-1:1000 for WB
<b>Source:</b> Rabbit	<b>Full Name:</b> PR domain containing 15	
<b>Isotype:</b> IgG	<b>Calculated MW:</b> 1507 aa, 169 kDa	
<b>Immunogen Catalog Number:</b> AG22296	<b>Observed MW:</b> 169 kDa	

## Applications

<b>Tested Applications:</b> IP, WB, ELISA	<b>Positive Controls:</b> WB : MCF-7 cells, Jurkat cells IP : MCF-7 cells,
<b>Cited Applications:</b> WB	
<b>Species Specificity:</b> human	
<b>Cited Species:</b> human	

## Background Information

The PR-domain containing proteins (PRDMs) have a common involvement in the modulation of gene activities. A PR-domain family member usually produces two products, called PR-plus and PR-minus, which differ by the presence or absence of the PR domain, respectively. The PR-plus product is underexpressed or disrupted in cancer cells, whereas the PR-minus product is present or overexpressed in cancer cells. This imbalance in the amount of the two products, which is a result of either genetic or epigenetic events, appears to be a determining factor of malignancy. PRDM15 (PR domain-containing protein 15), also known as PFM15 or ZNF298, is a 1507 amino acid protein belonging to the PRDM family. Localizing to the nucleus, PRDM15 contains sixteen C2H2-type zinc fingers and one SET domain. It is believed to participate in transcriptional regulation and may be involved in cell differentiation and tumorigenesis. PRDM15 exists several isoform and molecular weight of respective isoform is 169 kDa, 135kDa, 62kDa.

## Notable Publications

Author	Pubmed ID	Journal	Application
Nianli Liu	37817227	J Exp Clin Cancer Res	WB

## Storage

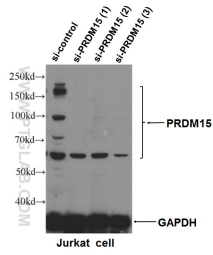
**Storage:**  
Store at -20°C. Stable for one year after shipment.  
**Storage Buffer:**  
PBS with 0.02% sodium azide and 50% glycerol pH 7.3.  
Aliquoting is unnecessary for -20°C storage

\*\*\* 20ul sizes contain 0.1% BSA

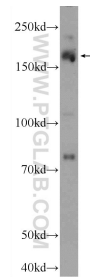
For technical support and original validation data for this product please contact:  
T: 1 (888) 4PTGLAB (1-888-478-4522) (toll free in USA), or 1(312) 455-8498 (outside USA)  
E: proteintech@ptglab.com  
W: ptglab.com

This product is exclusively available under Proteintech Group brand and is not available to purchase from any other manufacturer.

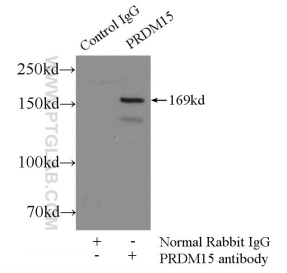
## Selected Validation Data



WB result of PRDM15 (25590-1-AP, 1:500) with si-control and si-PRDM15 transfected Jurkat cells.



MCF-7 cells were subjected to SDS PAGE followed by western blot with 25590-1-AP (PRDM15 Antibody) at dilution of 1:300 incubated at room temperature for 1.5 hours.



IP Result of anti-PRDM15 (IP:25590-1-AP, 5ug; Detection:25590-1-AP 1:500) with MCF-7 cells lysate 2500ug.