

For Research Use Only

MUPCDH Polyclonal antibody

Catalog Number: 25619-1-AP



Basic Information

Catalog Number: 25619-1-AP	GenBank Accession Number: BC038405	Purification Method: Antigen affinity purification
Size: 150ul , Concentration: 900 µg/ml by Nanodrop and 360 µg/ml by Bradford method using BSA as the standard;	GeneID (NCBI): 53841	Recommended Dilutions: WB 1:200-1:1000 IHC 1:20-1:200
Source: Rabbit	Full Name: mucin-like protocadherin	
Isotype: IgG	Calculated MW: 845 aa, 88 kDa	
Immunogen Catalog Number: AG22537	Observed MW: 70 kDa	

Applications

Tested Applications: IHC, WB, ELISA	Positive Controls: WB : HEK-293 cells,
Species Specificity: human	IHC : human kidney tissue, human small intestine tissue
Note-IHC: suggested antigen retrieval with TE buffer pH 9.0; (*) Alternatively, antigen retrieval may be performed with citrate buffer pH 6.0	

Background Information

MUPCDH (Mu-protocadherin), also known as MUCDHL (Mucin and cadherin-like protein) and CDHR5 (Cadherin-related family member 5), is a member of the cadherin superfamily. It is involved in calcium-dependent cell adhesion and may have additional functions in terminally differentiated epithelia. The MUPCDH gene maps to 11p15.5, with highest expression in kidney, liver, colon and small intestine. Alternatively spliced transcript variants encoding different isoforms have been described. (PMID: 12167596; 21839066)

Storage

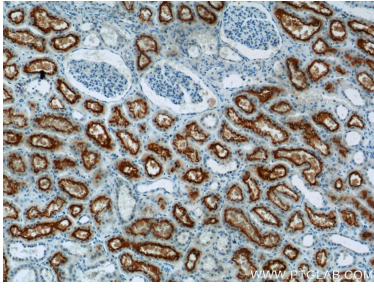
Storage:
Store at -20°C. Stable for one year after shipment.
Storage Buffer:
PBS with 0.02% sodium azide and 50% glycerol pH 7.3.
Aliquoting is unnecessary for -20°C storage

*** 20ul sizes contain 0.1% BSA

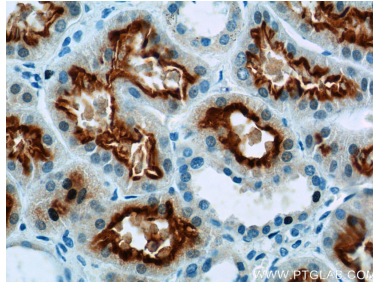
For technical support and original validation data for this product please contact:
T: 1 (888) 4PTGLAB (1-888-478-4522) (toll free in USA), or 1(312) 455-8498 (outside USA) E: proteintech@ptglab.com W: ptglab.com

This product is exclusively available under Proteintech Group brand and is not available to purchase from any other manufacturer.

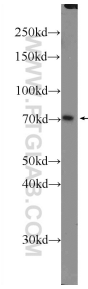
Selected Validation Data



Immunohistochemical analysis of paraffin-embedded human kidney tissue slide using 25619-1-AP (MUPCDH Antibody) at dilution of 1:400 (under 10x lens).



Immunohistochemical analysis of paraffin-embedded human kidney tissue slide using 25619-1-AP (MUPCDH Antibody) at dilution of 1:400 (under 40x lens).



HEK-293 cells were subjected to SDS PAGE followed by western blot with 25619-1-AP (MUPCDH Antibody) at dilution of 1:300 incubated at room temperature for 1.5 hours.