

For Research Use Only

ZCRB1 Polyclonal antibody

Catalog Number: 25629-1-AP **1 Publications**



Basic Information

Catalog Number: 25629-1-AP	GenBank Accession Number: BC022543	Purification Method: Antigen affinity purification
Size: 150ul , Concentration: 600 µg/ml by Nanodrop and 367 µg/ml by Bradford method using BSA as the standard;	GeneID (NCBI): 85437	Recommended Dilutions: WB 1:500-1:1000 IF 1:20-1:200
Source: Rabbit	Full Name: zinc finger CCHC-type and RNA binding motif 1	
Isotype: IgG	Calculated MW: 217 aa, 25 kDa	
Immunogen Catalog Number: AG22095	Observed MW: 25-30 kDa	

Applications

Tested Applications: IF, WB, ELISA	Positive Controls: WB : mouse testis tissue, Raji cells, Neuro-2a cells, SMMC-7721 cells IF : HepG2 cells,
Cited Applications: WB	
Species Specificity: human, mouse	
Cited Species: human	

Background Information

Notable Publications

Author	Pubmed ID	Journal	Application
Jian Song	35538499	J Exp Clin Cancer Res	WB

Storage

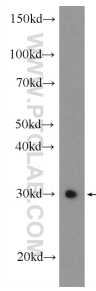
Storage:
Store at -20°C. Stable for one year after shipment.
Storage Buffer:
PBS with 0.02% sodium azide and 50% glycerol pH 7.3.
Aliquoting is unnecessary for -20°C storage

***** 20ul sizes contain 0.1% BSA**

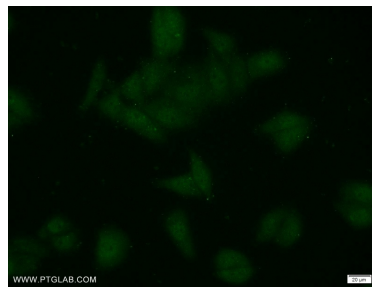
For technical support and original validation data for this product please contact:
T: 1 (888) 4PTGLAB (1-888-478-4522) (toll free in USA), or 1(312) 455-8498 (outside USA)
E: proteintech@ptglab.com
W: ptglab.com

This product is exclusively available under Proteintech Group brand and is not available to purchase from any other manufacturer.

Selected Validation Data



mouse testis tissue were subjected to SDS PAGE followed by western blot with 25629-1-AP (ZCRB1 Antibody) at dilution of 1:600 incubated at room temperature for 1.5 hours.



Immunofluorescent analysis of HepG2 cells using 25629-1-AP (ZCRB1 antibody) at dilution of 1:50 and Alexa Fluor 488-conjugated AffiniPure Goat Anti-Rabbit IgG(H+L).