

For Research Use Only

PIM2 Polyclonal antibody

Catalog Number: 25865-1-AP **1 Publications**



Basic Information

Catalog Number: 25865-1-AP	GenBank Accession Number: BC018111	Purification Method: Antigen affinity purification
Size: 150ul , Concentration: 260 µg/ml by Nanodrop and 160 µg/ml by Bradford method using BSA as the standard;	GeneID (NCBI): 11040	Recommended Dilutions: IP 0.5-4.0 ug for IP and 1:200-1:1000 for WB
Source: Rabbit	Full Name: pim-2 oncogene	IHC 1:50-1:500
Isotype: IgG	Calculated MW: 311 aa, 34 kDa	
Immunogen Catalog Number: AG23130	Observed MW: 34 kDa	

Applications

Tested Applications: IHC, IP, ELISA	Positive Controls: IP : Raji cells, IHC : mouse liver tissue,
Cited Applications: WB	
Species Specificity: human	
Cited Species: human	
Note-IHC: suggested antigen retrieval with TE buffer pH 9.0; (*) Alternatively, antigen retrieval may be performed with citrate buffer pH 6.0	

Background Information

PIM2 was first identified in T and B cell lymphomas in mice and is a member of a serine/threonine kinase family of proto-oncogenes, which also includes PIM1 and PIM3 (PMID:24505470). They share high sequence homology at the amino acid level; PIM1 and PIM2 are 61% identical and PIM1 and PIM3 are 71% identical (PMID:34503111). The PIM2 protein plays an important role in promoting cell survival and preventing apoptosis. PIM2 is mainly expressed in lymphoid and brain tissues. In human cells, the PIM2 kinase has only two isoforms (34 and 41 kDa), but in mice there are three (34, 37, and 40 kDa), and the 34 kDa isoform has been the main focus of many studies because it plays a crucial role in tumor progression (PMID:33854618).

Notable Publications

Author	Pubmed ID	Journal	Application
Yong Meng	35026522	Phytomedicine	WB

Storage

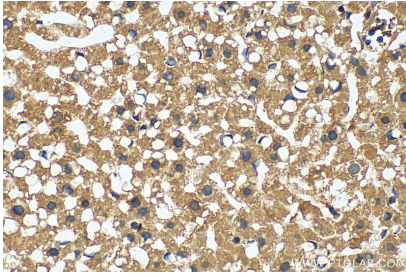
Storage:
Store at -20°C. Stable for one year after shipment.
Storage Buffer:
PBS with 0.02% sodium azide and 50% glycerol pH 7.3.
Aliquoting is unnecessary for -20°C storage

***** 20ul sizes contain 0.1% BSA**

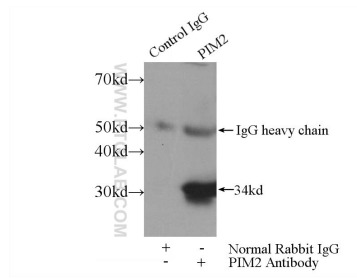
For technical support and original validation data for this product please contact:
T: 1 (888) 4PTGLAB (1-888-478-4522) (toll free in USA), or 1(312) 455-8498 (outside USA)
E: proteintech@ptglab.com
W: ptglab.com

This product is exclusively available under Proteintech Group brand and is not available to purchase from any other manufacturer.

Selected Validation Data



Immunohistochemical analysis of paraffin-embedded mouse liver tissue slide using 25865-1-AP (PIM2 antibody) at dilution of 1:200 (under 40x lens). Heat mediated antigen retrieval with Tris-EDTA buffer (pH 9.0).



IP Result of anti-PIM2 (IP:25865-1-AP, 4ug; Detection:25865-1-AP 1:300) with Raji cells lysate 1320ug.