

For Research Use Only

# RSF1 Polyclonal antibody

Catalog Number: 26011-1-AP

Featured Product



## Basic Information

### Catalog Number:

26011-1-AP

### Size:

150ul, Concentration: 850 ug/ml by Nanodrop;

### Source:

Rabbit

### Isotype:

IgG

### Immunogen Catalog Number:

AG22456

### GenBank Accession Number:

BC153210

### GeneID (NCBI):

51773

### UNIPROT ID:

Q96T23

### Full Name:

remodeling and spacing factor 1

### Calculated MW:

1441 aa, 164 kDa

### Observed MW:

250 kDa

### Purification Method:

Antigen affinity purification

### Recommended Dilutions:

WB 1:1000-1:4000

## Applications

### Tested Applications:

WB, ELISA

### Species Specificity:

human

### Positive Controls:

WB : COLO 320 cells, HeLa cells, HEK-293 cells, U-251 cells

## Background Information

RSF1, remodelling and spacing factor 1, is an important interphase centromere protein and is overexpressed in many types of cancers and correlated with poor overall survival. RSF1 has functions mainly in maintaining chromosome stability, facilitating DNA repair, maintaining the protein homeostasis of RSF1 and suppressing the transcription of some oncogenes when RSF1 protein is expressed at an optimal level; however, RSF1 overexpression facilitates drug resistance and cell cycle checkpoint inhibition to prompt cancer proliferation and survival. The RSF1 expression level and gene background are crucial for RSF1 functions, which may explain why RSF1 has different functions in different cancer types. The calculated molecular weight of RSF1 is 163 kDa, but 26011-1-AP can detect a band around 250 kDa, we validated the specificity by knock down. (PMID: 34147108)

## Storage

### Storage:

Store at -20°C. Stable for one year after shipment.

### Storage Buffer:

PBS with 0.02% sodium azide and 50% glycerol pH 7.3.

Aliquoting is unnecessary for -20°C storage

\*\*\* 20ul sizes contain 0.1% BSA

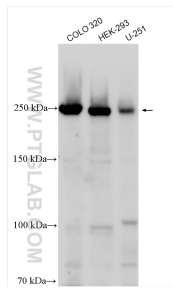
For technical support and original validation data for this product please contact:

T: 1 (888) 4PTGLAB (1-888-478-4522) (toll free in USA), or 1(312) 455-8498 (outside USA)

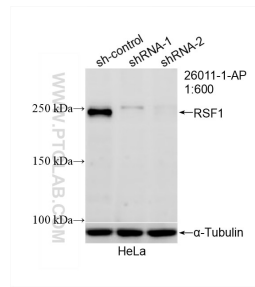
E: [proteintech@ptglab.com](mailto:proteintech@ptglab.com)  
W: [ptglab.com](http://ptglab.com)

This product is exclusively available under Proteintech Group brand and is not available to purchase from any other manufacturer.

## Selected Validation Data



Various lysates were subjected to SDS PAGE followed by western blot with 26011-1-AP (RSF1 antibody) at dilution of 1:2000 incubated at room temperature for 1.5 hours.



WB result of RSF1 antibody (26011-1-AP; 1:600; incubated at room temperature for 1.5 hours) with sh-Control and sh-RSF1 transfected HeLa cells.