

For Research Use Only

CFD Polyclonal antibody

Catalog Number: 26050-1-AP

2 Publications



Basic Information

Catalog Number: 26050-1-AP	GenBank Accession Number: BC057807	Purification Method: Antigen affinity purification
Size: 150ul , Concentration: 400 µg/ml by Nanodrop and 233 µg/ml by Bradford method using BSA as the standard;	GeneID (NCBI): 1675	Recommended Dilutions: WB 1:500-1:1000
Source: Rabbit	Full Name: complement factor D (adipsin)	
Isotype: IgG	Calculated MW: 253 aa, 27 kDa	
Immunogen Catalog Number: AG23473	Observed MW: 27 kDa	

Applications

Tested Applications: WB, ELISA	Positive Controls: WB : human plasma tissue, human placenta tissue
Cited Applications: WB	
Species Specificity: human	
Cited Species: human	

Background Information

Notable Publications

Author	Pubmed ID	Journal	Application
Muyao Ye	34642907	Immunol Res	WB
Zheng Wang	37188751	Hypertens Res	WB

Storage

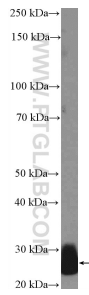
Storage:
Store at -20°C. Stable for one year after shipment.
Storage Buffer:
PBS with 0.02% sodium azide and 50% glycerol pH 7.3.
Aliquoting is unnecessary for -20°C storage

*** 20ul sizes contain 0.1% BSA

For technical support and original validation data for this product please contact:
T: 1 (888) 4PTGLAB (1-888-478-4522) (toll free in USA), or 1(312) 455-8498 (outside USA)
E: proteintech@ptglab.com
W: ptglab.com

This product is exclusively available under Proteintech Group brand and is not available to purchase from any other manufacturer.

Selected Validation Data



human plasma were subjected to SDS PAGE followed by western blot with 26050-1-AP (CFD Antibody) at dilution of 1:600 incubated at room temperature for 1.5 hours.