

For Research Use Only

# CCM2 Polyclonal antibody

Catalog Number: 26270-1-AP

Featured Product

1 Publications



## Basic Information

<b>Catalog Number:</b> 26270-1-AP	<b>GenBank Accession Number:</b> BC004903	<b>Purification Method:</b> Antigen affinity purification
<b>Size:</b> 150ul, Concentration: 350 µg/ml by Nanodrop and 240 µg/ml by Bradford method using BSA as the standard;	<b>GeneID (NCBI):</b> 83605	<b>Recommended Dilutions:</b> WB 1:500-1:2000 IHC 1:100-1:400 IF 1:50-1:100
<b>Source:</b> Rabbit	<b>Full Name:</b> cerebral cavernous malformation 2	
<b>Isotype:</b> IgG	<b>Calculated MW:</b> 49 kDa	
<b>Immunogen Catalog Number:</b> AG24233	<b>Observed MW:</b> 52 kDa	

## Applications

<b>Tested Applications:</b> IF, IHC, WB, ELISA	<b>Positive Controls:</b> WB: MCF-7 cells, IHC: human liver cancer tissue, IF: MCF-7 cells,
<b>Cited Applications:</b> WB	
<b>Species Specificity:</b> human	
<b>Cited Species:</b> human	

**Note-IHC: suggested antigen retrieval with TE buffer pH 9.0; (\*) Alternatively, antigen retrieval may be performed with citrate buffer pH 6.0**

## Background Information

### Notable Publications

Author	Pubmed ID	Journal	Application
Koichi Miura	28432261	Biochem J	WB

## Storage

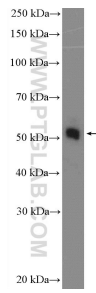
**Storage:**  
Store at -20°C. Stable for one year after shipment.  
**Storage Buffer:**  
PBS with 0.02% sodium azide and 50% glycerol pH 7.3.  
Aliquoting is unnecessary for -20°C storage

\*\*\* 20ul sizes contain 0.1% BSA

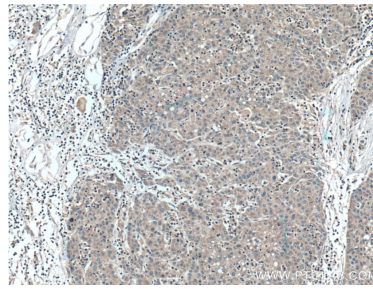
For technical support and original validation data for this product please contact:  
T: 1 (888) 4PTGLAB (1-888-478-4522) (toll free in USA), or 1(312) 455-8498 (outside USA)  
E: proteintech@ptglab.com  
W: ptglab.com

This product is exclusively available under Proteintech Group brand and is not available to purchase from any other manufacturer.

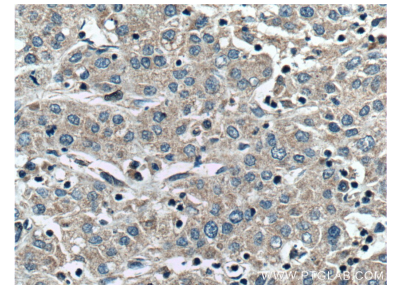
## Selected Validation Data



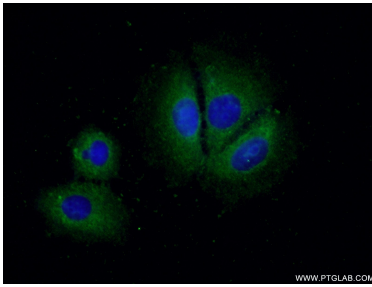
MCF-7 cells were subjected to SDS PAGE followed by western blot with 26270-1-AP (CCM2 Antibody) at dilution of 1:1000 incubated at room temperature for 1.5 hours.



Immunohistochemical analysis of paraffin-embedded human liver cancer tissue slide using 26270-1-AP (CCM2 Antibody) at dilution of 1:200 (under 10x lens). Heat mediated antigen retrieval with Tris-EDTA buffer (pH 9.0).



Immunohistochemical analysis of paraffin-embedded human liver cancer tissue slide using 26270-1-AP (CCM2 Antibody) at dilution of 1:200 (under 40x lens). Heat mediated antigen retrieval with Tris-EDTA buffer (pH 9.0).



Immunofluorescent analysis of (-20°C Ethanol) fixed MCF-7 cells using 26270-1-AP (CCM2 antibody) at dilution of 1:50 and Alexa Fluor 488-conjugated AffiniPure Goat Anti-Rabbit IgG(H+L).