

For Research Use Only

# KLK4 Polyclonal antibody

Catalog Number: 26547-1-AP



## Basic Information

**Catalog Number:**  
26547-1-AP

**Size:**  
150ul, Concentration: 1000 µg/ml by Nanodrop and 467 µg/ml by Bradford method using BSA as the standard;

**Source:**  
Rabbit

**Isotype:**  
IgG

**Immunogen Catalog Number:**  
AG24240

**GenBank Accession Number:**  
BC069325

**GeneID (NCBI):**  
9622

**Full Name:**  
kallikrein-related peptidase 4

**Calculated MW:**  
254 aa, 27 kDa

**Observed MW:**  
30 kDa

**Purification Method:**  
Antigen affinity purification

**Recommended Dilutions:**  
IP 0.5-4.0 ug for IP and 1:200-1:1000 for WB  
IHC 1:50-1:500

## Applications

**Tested Applications:**  
IHC, IP, ELISA

**Species Specificity:**  
human

**Note-IHC: suggested antigen retrieval with TE buffer pH 9.0; (\*) Alternatively, antigen retrieval may be performed with citrate buffer pH 6.0**

**Positive Controls:**

IP: DU 145 cells,

IHC: human prostate hyperplasia tissue,

## Background Information

### Storage

**Storage:**

Store at -20°C. Stable for one year after shipment.

**Storage Buffer:**

PBS with 0.02% sodium azide and 50% glycerol pH 7.3.

Aliquoting is unnecessary for -20°C storage

\*\*\* 20ul sizes contain 0.1% BSA

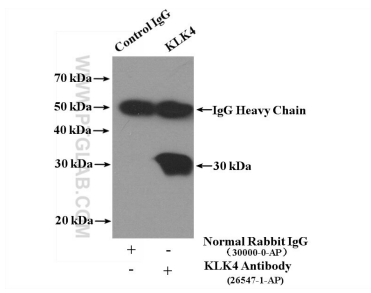
For technical support and original validation data for this product please contact:

T: 1 (888) 4PTGLAB (1-888-478-4522) (toll free in USA), or 1(312) 455-8498 (outside USA)

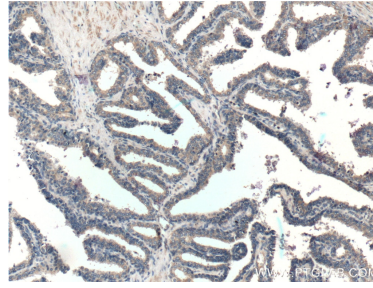
E: proteintech@ptglab.com  
W: ptglab.com

This product is exclusively available under Proteintech Group brand and is not available to purchase from any other manufacturer.

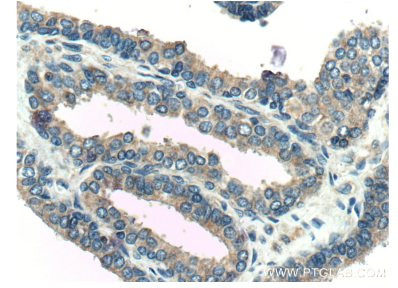
## Selected Validation Data



IP Result of anti-KLK4 (IP:26547-1-AP, 4ug; Detection:26547-1-AP 1:300) with DU 145 cells lysate 2200ug.



Immunohistochemical analysis of paraffin-embedded human prostate hyperplasia tissue slide using 26547-1-AP (KLK4 Antibody) at dilution of 1:200 (under 10x lens).



Immunohistochemical analysis of paraffin-embedded human prostate hyperplasia tissue slide using 26547-1-AP (KLK4 Antibody) at dilution of 1:200 (under 40x lens).