

For Research Use Only

mCherry Polyclonal antibody

Catalog Number: 26765-1-AP

58 Publications



Basic Information

Catalog Number:

26765-1-AP

Size:

150ul, Concentration: 700 µg/ml by Nanodrop;

Source:

Rabbit

Isotype:

IgG

Immunogen Catalog Number:

AG25320

GenBank Accession Number:

GeneID (NCBI):

Full Name:

Calculated MW:

27 kDa

Purification Method:

Antigen affinity purification

Recommended Dilutions:

WB 1:1000-1:4000

IF 1:400-1:1600

Applications

Tested Applications:

IF, WB, ELISA

Cited Applications:

CoIP, IF, IHC, IP, WB

Species Specificity:

recombinant protein

Cited Species:

human, D. punctatus, yeast, mouse, zebrafish, plant

Positive Controls:

WB : Transfected HEK-293 cells,

IF : Transfected HEK-293 cells,

Background Information

mCherry is a fluorophore (a fluorescent protein) used in biotechnology as a tracer to follow the flow of fluids, as a marker when tagged to molecules and cell components. mCherry and the majority of red fluorescent proteins derive from a protein isolated from *Discosoma* sp. mCherry is a monomeric fluorescent construct with peak absorption/emission at 587 nm and 610 nm, respectively.

Notable Publications

| Author | Pubmed ID | Journal | Application |
|---------------|-----------|---------------|-------------|
| Rong Zhou | 36117989 | iScience | IF |
| Xiaodong Wang | 34890460 | Plant Physiol | IF, CoIP |
| Xiaoqiang Zhu | 36314411 | Adv Mater | WB |

Storage

Storage:

Store at -20°C. Stable for one year after shipment.

Storage Buffer:

PBS with 0.02% sodium azide and 50% glycerol pH 7.3.

Aliquoting is unnecessary for -20°C storage

*** 20ul sizes contain 0.1% BSA

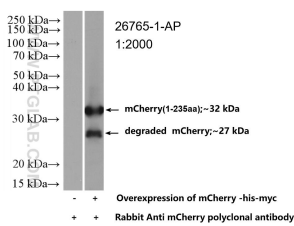
For technical support and original validation data for this product please contact:

T: 1 (888) 4PTGLAB (1-888-478-4522) (toll free in USA), or 1(312) 455-8498 (outside USA)

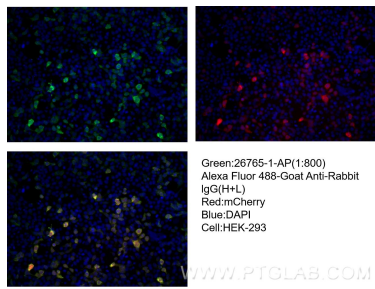
E: proteintech@ptglab.com
W: ptglab.com

This product is exclusively available under Proteintech Group brand and is not available to purchase from any other manufacturer.

Selected Validation Data



WB result of mCherry antibody (26765-1-AP; 1:2000; room temperature for 1.5 hours) with negative control and mCherry overexpressed Transfected HEK-293 cells.



Immunofluorescent analysis of (-20°C Ethanol) fixed Transfected HEK-293 cells using mCherry antibody (26765-1-AP) at dilution of 1:800 and CoraLite®488-Conjugated AffiniPure Goat Anti-Rabbit IgG(H+L).