

For Research Use Only

CWC22 Polyclonal antibody

Catalog Number: 26898-1-AP **1 Publications**



Basic Information

Catalog Number: 26898-1-AP	GenBank Accession Number: BC093954	Purification Method: Antigen affinity purification
Size: 150ul , Concentration: 650 µg/ml by Nanodrop and 400 µg/ml by Bradford method using BSA as the standard;	GeneID (NCBI): 57703	Recommended Dilutions: WB 1:2000-1:20000
Source: Rabbit	Full Name: CWC22 spliceosome-associated protein homolog (S. cerevisiae)	
Isotype: IgG	Calculated MW: 908 aa, 106 kDa	
Immunogen Catalog Number: AG25466	Observed MW: 105-110 kDa	

Applications

Tested Applications: WB,ELISA	Positive Controls: WB : A549 cells, HepG2 cells
Cited Applications: WB	
Species Specificity: human	
Cited Species: human	

Background Information

CWC22, Pre-mRNA-splicing factor CWC22 homolog, is a 908 amino acid protein, which contains 1 MI domain and 1 MIF4G domain and belongs to the CWC22 family. CWC22 is required for pre-mRNA splicing and for exon-junction complex (EJC) assembly and hinders EIF4A3 from non-specifically binding RNA and escorts it to the splicing machinery to promote EJC assembly on mature mRNAs.

Notable Publications

Author	Pubmed ID	Journal	Application
Cole Townsend	33243851	Science	WB

Storage

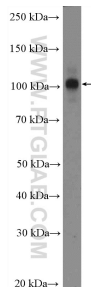
Storage:
Store at -20°C. Stable for one year after shipment.
Storage Buffer:
PBS with 0.02% sodium azide and 50% glycerol pH 7.3.
Aliquoting is unnecessary for -20°C storage

*** 20ul sizes contain 0.1% BSA

For technical support and original validation data for this product please contact:
T: 1 (888) 4PTGLAB (1-888-478-4522) (toll free in USA), or 1(312) 455-8498 (outside USA) E: proteintech@ptglab.com W: ptglab.com

This product is exclusively available under Proteintech Group brand and is not available to purchase from any other manufacturer.

Selected Validation Data



A549 cells were subjected to SDS PAGE followed by western blot with 26898-1-AP (CWC22 Antibody) at dilution of 1:5000 incubated at room temperature for 1.5 hours.