

For Research Use Only

# NAP1L4 Polyclonal antibody

Catalog Number: 27889-1-AP

Featured Product



## Basic Information

<b>Catalog Number:</b> 27889-1-AP	<b>GenBank Accession Number:</b> BC022090	<b>Purification Method:</b> Antigen affinity purification
<b>Size:</b> 150ul , Concentration: 600 µg/ml by Nanodrop and 400 µg/ml by Bradford method using BSA as the standard;	<b>GeneID (NCBI):</b> 4676	<b>Recommended Dilutions:</b> WB 1:500-1:2000
<b>Source:</b> Rabbit	<b>Full Name:</b> nucleosome assembly protein 1-like 4	
<b>Isotype:</b> IgG	<b>Calculated MW:</b> 375 aa, 43 kDa	
<b>Immunogen Catalog Number:</b> AG27469	<b>Observed MW:</b> 52 kDa	

## Applications

<b>Tested Applications:</b> WB, ELISA	<b>Positive Controls:</b> WB : HeLa cells, HuH-7 cells, mouse heart tissue, mouse testis tissue, rat heart tissue, U2OS cells
<b>Species Specificity:</b> Human	

## Background Information

NAP1L4 is a member of the nucleosome assembly protein (NAP) family which can interact with both core and linker histones. It can shuttle between the cytoplasm and nucleus, suggesting a role as a histone chaperone. This gene is one of several located near the imprinted gene domain of 11p15.5, an important tumor-suppressor gene region. Alterations in this region have been associated with the Beckwith-Wiedemann syndrome, Wilms tumor, rhabdomyosarcoma, adrenocortical carcinoma, and lung, ovarian, and breast cancer.

## Storage

**Storage:**  
Store at -20°C. Stable for one year after shipment.  
**Storage Buffer:**  
PBS with 0.02% sodium azide and 50% glycerol pH 7.3.  
*Aliquoting is unnecessary for -20°C storage*

\*\*\* 20ul sizes contain 0.1% BSA

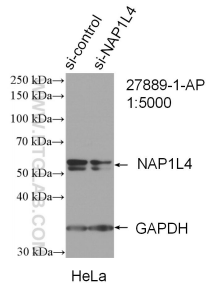
For technical support and original validation data for this product please contact:  
T: 1 (888) 4PTGLAB (1-888-478-4522) (toll free in USA), or 1(312) 455-8498 (outside USA)  
E: proteintech@ptglab.com  
W: ptglab.com

This product is exclusively available under Proteintech Group brand and is not available to purchase from any other manufacturer.

## Selected Validation Data



Various lysates were subjected to SDS PAGE followed by western blot with 27889-1-AP (NAP1L4 antibody) at dilution of 1:1000 incubated at room temperature for 1.5 hours.



WB result of NAP1L4 antibody (27889-1-AP; 1:5000; incubated at room temperature for 1.5 hours) with sh-Control and sh-NAP1L4 transfected HeLa cells.