

For Research Use Only

PSAPL1 Polyclonal antibody

Catalog Number: 55128-1-AP



Basic Information

Catalog Number: 55128-1-AP	GenBank Accession Number: NM_001085382	Purification Method: Antigen affinity purification
Size: 150ul , Concentration: 493 µg/ml by Bradford method using BSA as the standard;	GeneID (NCBI): 768239	Recommended Dilutions: WB 1:500-1:1000 IF 1:20-1:200
Source: Rabbit	Full Name: prosaposin-like 1	
Isotype: IgG	Calculated MW: 57 kDa	
	Observed MW: 57-63 kDa	

Applications

Tested Applications: IF, WB, ELISA	Positive Controls:
Species Specificity: human	WB : human testis tissue, multi-cells/tissue IF : HepG2 cells,

Background Information

PSAPL1 is a protein like PSAP. It can be cleaved to be 5 chains: Saposin A-like, Saposin B-Val-like, Saposin B-like, Saposin C-like and Saposin D-like. PSAPL1 may activate the lysosomal degradation of sphingolipids. The antibody is specific to PSAPL1.

Storage

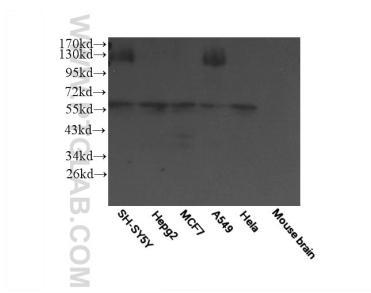
Storage:
Store at -20°C.
Storage Buffer:
PBS with 0.02% sodium azide and 50% glycerol pH 7.3.
Aliquoting is unnecessary for -20°C storage

*** 20ul sizes contain 0.1% BSA

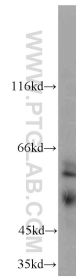
For technical support and original validation data for this product please contact:
T: 1 (888) 4PTGLAB (1-888-478-4522) (toll free in USA), or 1(312) 455-8498 (outside USA)
E: proteintech@ptglab.com
W: ptglab.com

This product is exclusively available under Proteintech Group brand and is not available to purchase from any other manufacturer.

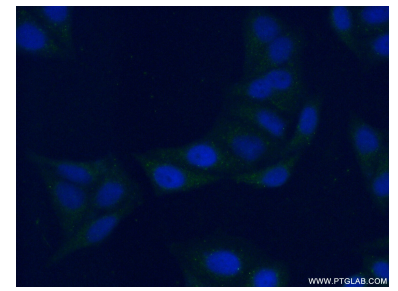
Selected Validation Data



WB result of 55128-1-AP.



human testis tissue were subjected to SDS PAGE followed by western blot with 55128-1-AP (PSAPL1 antibody) at dilution of 1:200 incubated at room temperature for 1.5 hours.



Immunofluorescent analysis of (-20°C Ethanol) fixed HepG2 cells using 55128-1-AP (PSAPL1 antibody) at dilution of 1:50 and Alexa Fluor 488-conjugated AffiniPure Goat Anti-Rabbit IgG(H+L).