

For Research Use Only

KLHL9 Polyclonal antibody

Catalog Number: 55394-1-AP



Basic Information

Catalog Number: 55394-1-AP	GenBank Accession Number: NM_018847	Purification Method: Antigen affinity purification
Size: 150ul , Concentration: 1000 µg/ml by Nanodrop and 360 µg/ml by Bradford method using BSA as the standard;	GeneID (NCBI): 55958	Recommended Dilutions: WB 1:200-1:1000
Source: Rabbit	Full Name: kelch-like 9 (Drosophila)	
Isotype: IgG	Calculated MW: 69 kDa	
	Observed MW: 80 kDa	

Applications

Tested Applications: WB, ELISA	Positive Controls: WB : HeLa cells,
Species Specificity: human	

Background Information

Storage

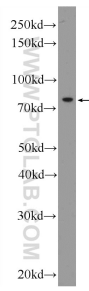
Storage:
Store at -20°C.
Storage Buffer:
PBS with 0.02% sodium azide and 50% glycerol pH 7.3.
Aliquoting is unnecessary for -20°C storage

*** 20ul sizes contain 0.1% BSA

For technical support and original validation data for this product please contact:
T: 1 (888) 4PTGLAB (1-888-478-4522) (toll free in USA), or 1(312) 455-8498 (outside USA)
E: proteintech@ptglab.com
W: ptglab.com

This product is exclusively available under Proteintech Group brand and is not available to purchase from any other manufacturer.

Selected Validation Data



HeLa cells were subjected to SDS PAGE followed by western blot with 55394-1-AP (KLHL9 Antibody) at dilution of 1:300 incubated at room temperature for 1.5 hours.