

For Research Use Only

PLOD3 Monoclonal antibody

Catalog Number: 60058-1-Ig

Featured Product

3 Publications



Basic Information

Catalog Number: 60058-1-Ig	GenBank Accession Number: BC011674	Purification Method: Protein A purification
Size: 150ul, Concentration: 2700 µg/ml by Nanodrop and 1600 µg/ml by Bradford method using BSA as the standard;	GeneID (NCBI): 8985	CloneNo.: 2G12B8
Source: Mouse	Full Name: procollagen-lysine, 2-oxoglutarate 5-dioxygenase 3	Recommended Dilutions: WB 1:5000-1:50000 IP 0.5-4.0 ug for IP and 1:500-1:1000 for WB
Isotype: IgG2a	Calculated MW: 738 aa, 85 kDa	IHC 1:20-1:200 IF 1:50-1:500
Immunogen Catalog Number: AG1480	Observed MW: 80-85 kDa	

Applications

Tested Applications:
IF, IHC, IP, WB, ELISA

Cited Applications:
WB

Species Specificity:
human, mouse, rat

Cited Species:
human, mouse

Note-IHC: suggested antigen retrieval with TE buffer pH 9.0; (*) Alternatively, antigen retrieval may be performed with citrate buffer pH 6.0

Positive Controls:

WB: A549 cells, HepG2 cells, human placenta tissue, PC-3 cells, K-562 cells, LNCaP cells, HeLa cells, HSC-T6 cells, NIH/3T3 cells, 4T1 cells

IP: HeLa cells,

IHC: human pancreas cancer tissue,

IF: HeLa cells,

Background Information

PLOD3, also named as LH3, forms hydroxylysine residues in -Xaa-Lys-Gly- sequences in collagens. These hydroxylysines serve as sites of attachment for carbohydrate units and are essential for the stability of the intermolecular collagen cross-links. The major function of PLOD3 in osteoblasts is to glucosylate galactosylhydroxylysine residues in type I collagen.

Notable Publications

Author	Pubmed ID	Journal	Application
Neus Bota-Rabasedas	33543040	Matrix Biol Plus	WB
Stephen A Watt	26380979	PLoS One	WB
Xiaochao Tan	34874914	JCI Insight	WB

Storage

Storage:

Store at -20°C. Stable for one year after shipment.

Storage Buffer:

PBS with 0.1% sodium azide and 50% glycerol pH 7.3.

Aliquoting is unnecessary for -20°C storage

*** 20ul sizes contain 0.1% BSA

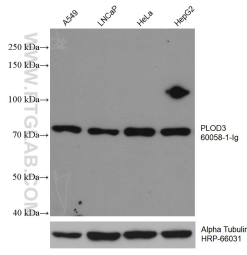
For technical support and original validation data for this product please contact:

T: 1 (888) 4PTGLAB (1-888-478-4522) (toll free in USA), or 1(312) 455-8498 (outside USA)

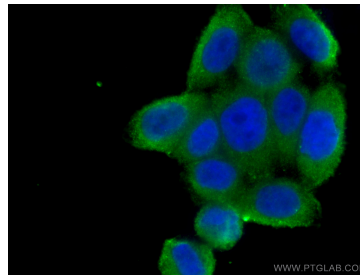
E: proteintech@ptglab.com
W: ptglab.com

This product is exclusively available under Proteintech Group brand and is not available to purchase from any other manufacturer.

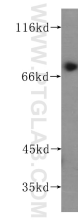
Selected Validation Data



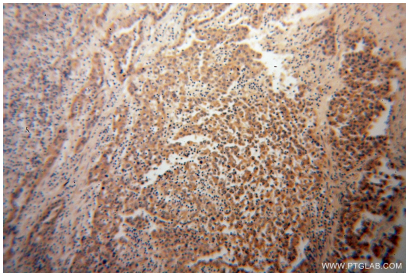
Various lysates were subjected to SDS PAGE followed by western blot with 60058-1-Ig (PLOD3 antibody) at dilution of 1:10000 incubated at room temperature for 1.5 hours. The membrane was stripped and reblotted with HRP-conjugated Alpha Tubulin Monoclonal antibody (HRP-66031) as loading control.



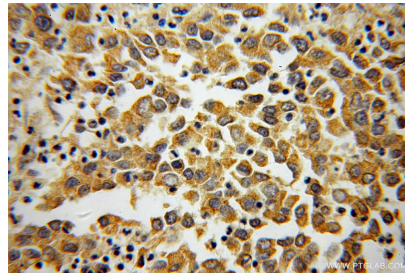
Immunofluorescent analysis of (-20°C Ethanol) fixed HeLa cells using 60058-1-Ig (PLOD3 antibody) at dilution of 1:100 and Coralite488-Conjugated AffiniPure Goat Anti-Mouse IgG(H+L).



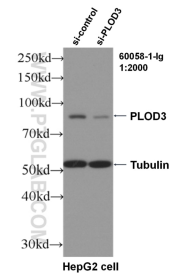
human placenta tissue were subjected to SDS PAGE followed by western blot with 60058-1-Ig (PLOD3 antibody) at dilution of 1:300 incubated at room temperature for 1.5 hours.



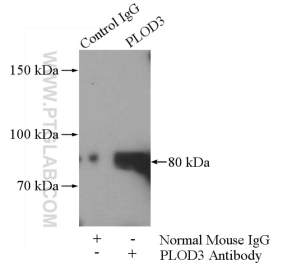
Immunohistochemical analysis of paraffin-embedded human pancreas cancer using 60058-1-Ig (PLOD3 antibody) at dilution of 1:100 (under 10x lens).



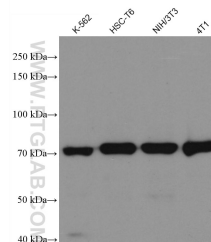
Immunohistochemical analysis of paraffin-embedded human pancreas cancer using 60058-1-Ig (PLOD3 antibody) at dilution of 1:100 (under 40x lens).



WB result of PLOD3 antibody (60058-1-Ig, 1:2000) with si-Control and si-PLOD3 transfected HepG2 cells.



IP Result of anti-PLOD3 (IP:60058-1-Ig, 5ug; Detection:60058-1-Ig 1:500) with HeLa cells lysate 1400ug.



Various lysates were subjected to SDS PAGE followed by western blot with 60058-1-Ig (PLOD3 antibody) at dilution of 1:10000 incubated at room temperature for 1.5 hours.