

For Research Use Only

IL-20RB Monoclonal antibody

Catalog Number: 60221-1-Ig

Featured Product

1 Publications



Basic Information

Catalog Number:

60221-1-Ig

GenBank Accession Number:

BC033292

Purification Method:

Protein A purification

Size:

150ul, Concentration: 2200 µg/ml by Nanodrop and 1467 µg/ml by Bradford method using BSA as the standard;

GeneID (NCBI):

53833

CloneNo.:

1A2A3

Source:

Mouse

UNIPROT ID:

Q6UXLO

Recommended Dilutions:

WB 1:2000-1:10000

Isotype:

IgG2b

Full Name:

interleukin 20 receptor beta

Immunogen Catalog Number:

AG14368

Calculated MW:

311 aa, 35 kDa

Observed MW:

35 kDa

Applications

Tested Applications:

FC, WB, ELISA

Positive Controls:

WB : A431 cells, MCF-10A cells, A375 cells, hTERT-RPE1 cells, HeLa cells

Cited Applications:

WB

Species Specificity:

human

Cited Species:

human

Background Information

Interleukin-20 receptor subunit beta (IL20RB) is a single-pass type I membrane protein of the type II cytokine receptor family. The interleukin-20-receptor I complex (IL-20-RI) is composed of two chains, IL20RA and IL20RB. IL-20-RI is a receptor for IL-19, IL-20 and IL-24. IL20RB can also form a heterodimer with IL22RA1. The IL22RA1/IL20RB dimer is a receptor for IL20 and IL24.

Notable Publications

Author	Pubmed ID	Journal	Application
Jia Li	34114949	Elife	WB

Storage

Storage:

Store at -20°C. Stable for one year after shipment.

Storage Buffer:

PBS with 0.02% sodium azide and 50% glycerol pH 7.3.

Aliquoting is unnecessary for -20°C storage

*** 20ul sizes contain 0.1% BSA

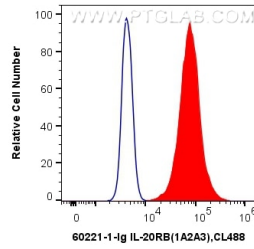
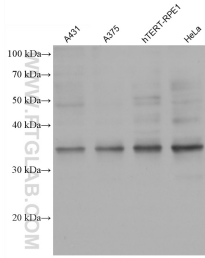
For technical support and original validation data for this product please contact:

T: 1 (888) 4PTGLAB (1-888-478-4522) (toll free in USA), or 1(312) 455-8498 (outside USA)

E: proteintech@ptglab.com
W: ptglab.com

This product is exclusively available under Proteintech Group brand and is not available to purchase from any other manufacturer.

Selected Validation Data



Various lysates were subjected to SDS PAGE followed by western blot with 60221-1-Ig (IL-20RB antibody) at dilution of 1:5000 incubated at room temperature for 1.5 hours.

1X10⁶ HeLa cells were intracellularly stained with 0.4 ug Anti-Human IL-20RB (60221-1-Ig, Clone:1A2A3) and CoraLite@488-Conjugated AffiniPure Goat Anti-Mouse IgG(H+L) at dilution 1:1000 (red), or 0.4 ug Control Antibody. Cells were fixed with 4% PFA and permeabilized with Flow Cytometry Perm Buffer (PF00011-C).