

For Research Use Only

BSA Monoclonal antibody

Catalog Number: 66201-1-Ig **13 Publications**



Basic Information

Catalog Number: 66201-1-Ig	GenBank Accession Number: GeneID (NCBI): 280717	Purification Method: Protein A purification
Size: 150ul , Concentration: 2300 µg/ml by Nanodrop and 1000 µg/ml by Bradford method using BSA as the standard;	Full Name: bovine serum albumin	CloneNo.: 2D11G3
Source: Mouse	Observed MW: 67 kDa	Recommended Dilutions: WB 1:5000-1:50000
Isotype: IgG1		

Applications

Tested Applications: WB, ELISA	Positive Controls: WB : bsa, Bovine serum tissue
Cited Applications: WB	
Species Specificity: bovine	
Cited Species: human, mouse, PCN033	

Background Information

BSA, also named as ALB and Bovine Serum albumin, is the main protein of plasma. It has a good binding capacity for water, Ca²⁺, Na⁺, K⁺, fatty acids, hormones, bilirubin and drugs. Its main function is the regulation of the colloidal osmotic pressure of blood.

Notable Publications

Author	Pubmed ID	Journal	Application
Jorge Sanz-Ros	36260670	Sci Adv	WB
Xiaoyin Wang	33068832	Mol Immunol	WB
Feng Liu	28164791	Microbiol Res	WB

Storage

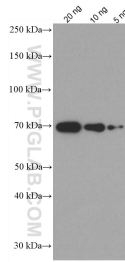
Storage:
Store at -20°C. Stable for one year after shipment.
Storage Buffer:
PBS with 0.02% sodium azide and 50% glycerol pH 7.3.
Aliquoting is unnecessary for -20°C storage

*** 20ul sizes contain 0.1% BSA

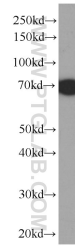
For technical support and original validation data for this product please contact:
T: 1 (888) 4PTGLAB (1-888-478-4522) (toll free in USA), or 1(312) 455-8498 (outside USA) E: proteintech@ptglab.com W: ptglab.com

This product is exclusively available under Proteintech Group brand and is not available to purchase from any other manufacturer.

Selected Validation Data



20ng, 10ng and 5ng BSA were subjected to SDS PAGE followed by western blot with 66201-1-Ig (BSA Antibody) at dilution of 1:10000 incubated at room temperature for 1.5 hours.



Bovine serum were subjected to SDS PAGE followed by western blot with 66201-1-Ig (BSA Antibody) at dilution of 1:4000 incubated at room temperature for 1.5 hours.