

For Research Use Only

Annexin V Monoclonal antibody

Catalog Number: 66245-1-Ig

Featured Product

1 Publications



Basic Information

Catalog Number:

66245-1-Ig

Size:

150ul, Concentration: 1400 µg/ml by Nanodrop and 933 µg/ml by Bradford method using BSA as the standard;

Source:

Mouse

Isotype:

IgG1

Immunogen Catalog Number:

AG1538

GenBank Accession Number:

BC001429

GeneID (NCBI):

308

UNIPROT ID:

P08758

Full Name:

annexin A5

Calculated MW:

36 kDa

Observed MW:

36 kDa

Purification Method:

Protein G purification

CloneNo.:

1E6A8

Recommended Dilutions:

WB 1:5000-1:15000

IHC 1:50-1:500

IF 1:400-1:1600

Applications

Tested Applications:

FC, IF, IHC, WB, ELISA

Cited Applications:

IF

Species Specificity:

human, mouse

Cited Species:

human

Note-IHC: suggested antigen retrieval with TE buffer pH 9.0; (*) Alternatively, antigen retrieval may be performed with citrate buffer pH 6.0

Positive Controls:

WB : HeLa cells, HEK-293 cells, human urine exosomes tissue, Raw 264.7 cells, NIH/3T3 cells, K-562 cells, HepG2 cells

IHC : human malignant melanoma tissue, human colon tissue, human spleen tissue

IF : HeLa cells,

Background Information

Annexin A5 (ANXA5), is a member of the structurally related family of annexin proteins some of which have been implicated in membrane-related events along exocytotic and endocytotic pathways. Annexin 5 is a phospholipase A2 and protein kinase C inhibitory protein with calcium channel activity and a potential role in cellular signal transduction, inflammation, growth and differentiation. Annexin 5 has also been described as placental anticoagulant protein I, vascular anticoagulant-alpha, endonexin II, lipocortin V, placental protein 4 and anchorin CII.

Notable Publications

| Author | Pubmed ID | Journal | Application |
|---------------------------|-----------|-------------|-------------|
| Zahrasadat Navaeiseddighi | 38060620 | PLoS Pathog | IF |

Storage

Storage:

Store at -20°C. Stable for one year after shipment.

Storage Buffer:

PBS with 0.02% sodium azide and 50% glycerol pH 7.3.

Aliquoting is unnecessary for -20°C storage

*** 20ul sizes contain 0.1% BSA

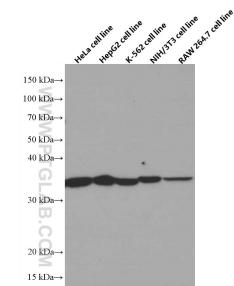
For technical support and original validation data for this product please contact:

T: 1 (888) 4PTGLAB (1-888-478-4522) (toll free in USA), or 1(312) 455-8498 (outside USA)

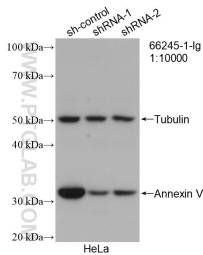
E: proteintech@ptglab.com
W: ptglab.com

This product is exclusively available under Proteintech Group brand and is not available to purchase from any other manufacturer.

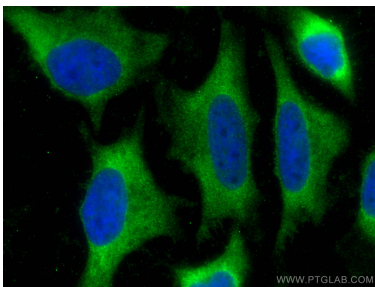
Selected Validation Data



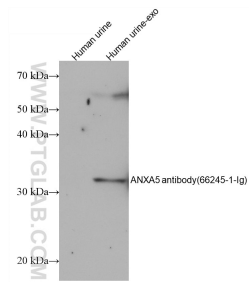
Various cells were subjected to SDS PAGE followed by western blot with 66245-1-Ig (Annexin V antibody) at dilution of 1:13000 incubated at room temperature for 1.5 hours.



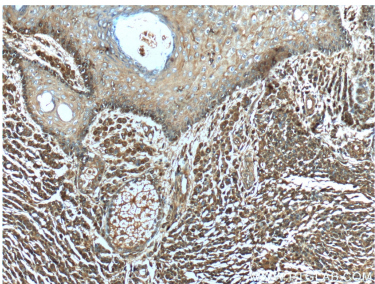
WB result of Annexin V antibody (66245-1-Ig; 1:10000; incubated at room temperature for 1.5 hours) with sh-Control and sh-Annexin V transfected HeLa cells.



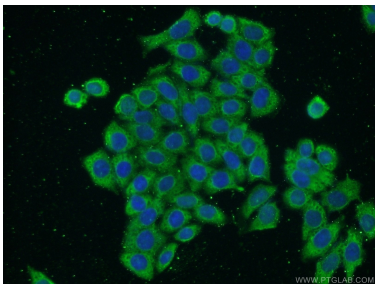
Immunofluorescent analysis of (-20°C Methanol) fixed HeLa cells using Annexin V antibody (66245-1-Ig, Clone: 1E6A8) at dilution of 1:800 and CoraLite®488-Conjugated AffiniPure Goat Anti-Mouse IgG(H+L).



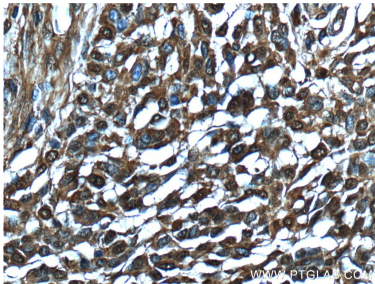
Various lysates were subjected to SDS PAGE followed by western blot with 66245-1-Ig (Annexin V antibody) at dilution of 1:5000 incubated at room temperature for 1.5 hours.



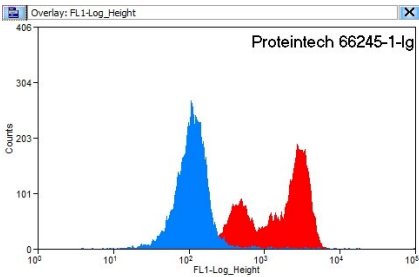
Immunohistochemical analysis of paraffin-embedded human malignant melanoma tissue slide using 66245-1-Ig (Annexin V antibody at dilution of 1:200 (under 10x lens).



Immunofluorescent analysis of HeLa cells using 66245-1-Ig (Annexin V antibody) at dilution of 1:50 and Alexa Fluor 488-conjugated AffiniPure Goat Anti-Mouse IgG (H+L).



Immunohistochemical analysis of paraffin-embedded human malignant melanoma tissue slide using 66245-1-Ig (Annexin V antibody at dilution of 1:200 (under 40x lens).



1X10⁶ HeLa cells were stained with 0.2ug Annexin V antibody (66245-1-Ig, red) and control antibody (blue). Fixed with 90% MeOH blocked with 3% BSA (30 min). Alexa Fluor 488-conjugated AffiniPure Goat Anti-Mouse IgG(H+L) with dilution 1:1500.