

ETS1 Monoclonal antibody

Catalog Number: 66598-1-Ig

Featured Product

2 Publications

Basic Information

Catalog Number: 66598-1-Ig	GenBank Accession Number: BC017314	Purification Method: Protein A purification
Size: 150ul , Concentration: 1700 µg/ml by Nanodrop and 1000 µg/ml by Bradford method using BSA as the standard;	GeneID (NCBI): 2113	CloneNo.: 4F2D4
Source: Mouse	Full Name: v-ets erythroblastosis virus E26 oncogene homolog 1 (avian)	Recommended Dilutions: WB 1:2000-1:5000 IF 1:400-1:1600
Isotype: IgG2b	Calculated MW: 441 aa, 50 kDa	
Immunogen Catalog Number: AG2127	Observed MW: 50 kDa	

Applications

Tested Applications: IF, WB, ELISA	Positive Controls:
Cited Applications: IHC, WB	WB : HepG2 cells, Jurkat cells, Daudi cells, HSCT6 cells
Species Specificity: Human, rat	IF : A431 cells,
Cited Species: human	

Background Information

ETS1 is a member of the ETS family of transcription factors, which are defined by the presence of a conserved ETS DNA-binding domain that recognizes the core consensus DNA sequence GGAA/T in target genes. ETS1 is a nuclear protein and primarily acts as a transcriptional activator, though it can also repress gene transcription. Since it is primarily expressed in lymphocytes, it plays several critical roles in immunity. In addition, it is important for angiogenesis. Since cells express several Ets proteins at the same time, functional redundancy is possible. This is particularly shown for the so-called housekeeping genes where several Ets factors were found to occupy the proximal promoters in vivo.

Notable Publications

Author	Pubmed ID	Journal	Application
Rebecca A Luchtel	35675522	Blood Adv	WB
Lihong Lu	34238215	Mol Med	WB, IHC

Storage

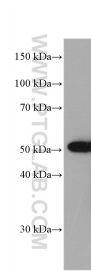
Storage:
Store at -20°C. Stable for one year after shipment.
Storage Buffer:
PBS with 0.02% sodium azide and 50% glycerol pH 7.3.
Aliquoting is unnecessary for -20°C storage

*** 20ul sizes contain 0.1% BSA

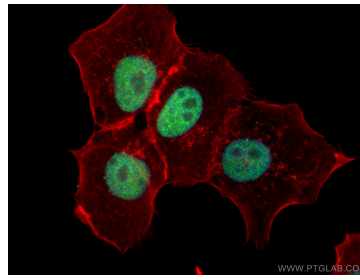
For technical support and original validation data for this product please contact:
T: 1 (888) 4PTGLAB (1-888-478-4522) (toll free in USA), or 1(312) 455-8498 (outside USA)
E: proteintech@ptglab.com
W: ptglab.com

This product is exclusively available under Proteintech Group brand and is not available to purchase from any other manufacturer.

Selected Validation Data



HepG2 cells were subjected to SDS PAGE followed by western blot with 66598-1-Ig (ETS1 antibody) at dilution of 1:5000 incubated at room temperature for 1.5 hours.



Immunofluorescent analysis of (4% PFA) fixed A431 cells using ETS1 antibody (66598-1-Ig, Clone: 4F2D4) at dilution of 1:800 and CoraLite®488-Conjugated AffiniPure Goat Anti-Mouse IgG(H+L), CL594-Phalloidin (red).