

For Research Use Only

CKB Monoclonal antibody

Catalog Number: 66764-1-Ig

Featured Product

1 Publications



Basic Information

Catalog Number: 66764-1-Ig	GenBank Accession Number: BC001190	Purification Method: Protein A purification
Size: 150ul, Concentration: 1300 µg/ml by Nanodrop and 1000 µg/ml by Bradford method using BSA as the standard;	GeneID (NCBI): 1152	CloneNo.: 2B7C3
Source: Mouse	Full Name: creatine kinase, brain	Recommended Dilutions: WB 1:10000-1:50000 IHC 1:500-1:2000
Isotype: IgG2a	Calculated MW: 43 kDa	
Immunogen Catalog Number: AG7933	Observed MW: 43 kDa	

Applications

Tested Applications: IHC, WB, ELISA	Positive Controls: WB : HEK-293 cells, HeLa cells
Cited Applications: WB	IHC : mouse brain tissue,
Species Specificity: Human, Mouse	
Cited Species: human	

Note-IHC: suggested antigen retrieval with TE buffer pH 9.0; (*) Alternatively, antigen retrieval may be performed with citrate buffer pH 6.0

Background Information

CKBB, also named as B-CK and CKB, is a member of the ATP:guanido phosphotransferase protein family. It is a cytoplasmic enzyme involved in energy homeostasis. CKBB reversibly catalyzes the transfer of phosphate between ATP and various phosphogens such as creatine phosphate. It acts as a homodimer in brain as well as in other tissues, and as a heterodimer with a similar muscle isozyme in heart. CK isoenzymes play a central role in energy transduction in tissues with large, fluctuating energy demands, such as skeletal muscle, heart, brain and spermatozoa. CK MB consists of a dimer of nonidentical chains. With MM being the major form in skeletal muscle and myocardium, MB existing in myocardium, and BB existing in many tissues, especially brain.

Notable Publications

Author	Pubmed ID	Journal	Application
Jiale Zhu	35513225	Pharmacol Res	WB

Storage

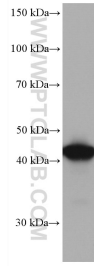
Storage:
Store at -20°C. Stable for one year after shipment.
Storage Buffer:
PBS with 0.02% sodium azide and 50% glycerol pH 7.3.
Aliquoting is unnecessary for -20°C storage

*** 20ul sizes contain 0.1% BSA

For technical support and original validation data for this product please contact:
T: 1 (888) 4PTGLAB (1-888-478-4522) (toll free in USA), or 1(312) 455-8498 (outside USA)
E: proteintech@ptglab.com
W: ptglab.com

This product is exclusively available under Proteintech Group brand and is not available to purchase from any other manufacturer.

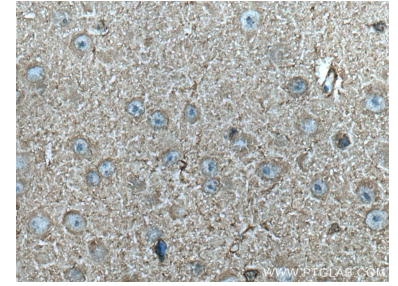
Selected Validation Data



HEK-293 cells were subjected to SDS PAGE followed by western blot with 66764-1-Ig (CKB antibody) at dilution of 1:10000 incubated at room temperature for 1.5 hours.



Immunohistochemical analysis of paraffin-embedded mouse brain tissue slide using 66764-1-Ig (CKB antibody) at dilution of 1:1000 (under 10x lens). Heat mediated antigen retrieval with Tris-EDTA buffer (pH 9.0).



Immunohistochemical analysis of paraffin-embedded mouse brain tissue slide using 66764-1-Ig (CKB antibody) at dilution of 1:1000 (under 40x lens). Heat mediated antigen retrieval with Tris-EDTA buffer (pH 9.0).