

For Research Use Only

Cytokeratin 16 Monoclonal antibody



Catalog Number: 66802-1-Ig

Featured Product

2 Publications

Basic Information

Catalog Number: 66802-1-Ig	GenBank Accession Number: BC039169	Purification Method: Protein A purification
Size: 150ul, Concentration: 1000 µg/ml by Nanodrop and 541 µg/ml by Bradford method using BSA as the standard;	GeneID (NCBI): 3868	CloneNo.: 2H4D8
Source: Mouse	Full Name: keratin 16	Recommended Dilutions: WB 1:5000-1:50000 IHC 1:2000-1:8000 IF 1:200-1:800
Isotype: IgG1	Calculated MW: 473 aa, 51 kDa	
Immunogen Catalog Number: AG11240	Observed MW: 51 kDa	

Applications

Tested Applications: FC, IF, IHC, WB, ELISA	Positive Controls: WB : A431 cells, human milk, A549 cells IHC : human tonsillitis tissue, human cervical cancer tissue, human skin cancer tissue IF : A431 cells,
Cited Applications: IF, IHC, WB	
Species Specificity: Human	
Cited Species: human	
Note-IHC: suggested antigen retrieval with TE buffer pH 9.0; (*) Alternatively, antigen retrieval may be performed with citrate buffer pH 6.0	

Background Information

Keratins are a large family of proteins that form the intermediate filament cytoskeleton of epithelial cells, which are classified into two major sequence types. Type I keratins are a group of acidic intermediate filament proteins, including K9-K23, and the hair keratins Ha1-Ha8. Type II keratins are the basic or neutral counterparts to the acidic type I keratins, including K1-K8, and the hair keratins, Hb1-Hb6. Keratin 16 is a type I cytokeratin. It is paired with keratin 6 in a number of epithelial tissues, including nail bed, esophagus, tongue, and hair follicles.

Notable Publications

Author	Pubmed ID	Journal	Application
Maha Elazezy	34359774	Cancers (Basel)	WB,IHC,IF
Xuejiao Liu	37553345	Nat Commun	WB,IHC

Storage

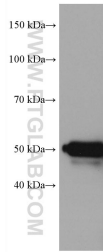
Storage:
Store at -20°C. Stable for one year after shipment.
Storage Buffer:
PBS with 0.02% sodium azide and 50% glycerol pH 7.3.
Aliquoting is unnecessary for -20°C storage

*** 20ul sizes contain 0.1% BSA

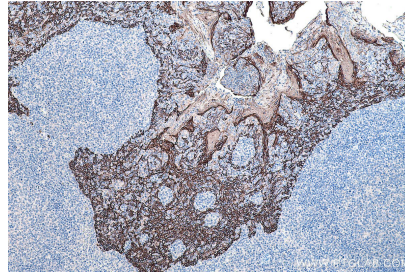
For technical support and original validation data for this product please contact:
T: 1 (888) 4PTGLAB (1-888-478-4522) (toll free in USA), or 1(312) 455-8498 (outside USA)
E: proteintech@ptglab.com
W: ptglab.com

This product is exclusively available under Proteintech Group brand and is not available to purchase from any other manufacturer.

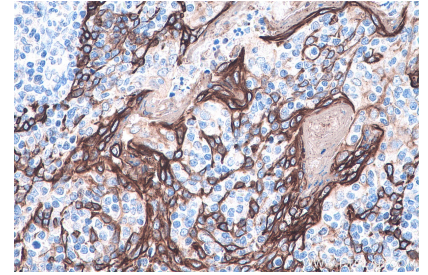
Selected Validation Data



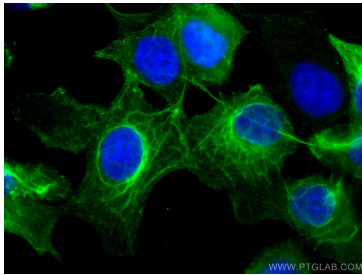
A431 cells were subjected to SDS PAGE followed by western blot with 66802-1-Ig (Cytokeratin 16 antibody) at dilution of 1:10000 incubated at room temperature for 1.5 hours.



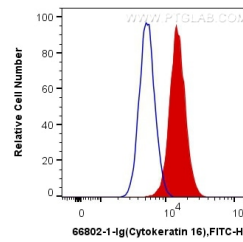
Immunohistochemical analysis of paraffin-embedded human tonsillitis tissue slide using 66802-1-Ig (Cytokeratin 16 antibody) at dilution of 1:4000 (under 10x lens). Heat mediated antigen retrieval with Tris-EDTA buffer (pH 9.0).



Immunohistochemical analysis of paraffin-embedded human tonsillitis tissue slide using 66802-1-Ig (Cytokeratin 16 antibody) at dilution of 1:4000 (under 40x lens). Heat mediated antigen retrieval with Tris-EDTA buffer (pH 9.0).



Immunofluorescent analysis of (-20°C Ethanol) fixed A431 cells using Cytokeratin 16 antibody (66802-1-Ig, Clone: 2H4D8) at dilution of 1:400 and CoraLite®488-Conjugated AffiniPure Goat Anti-Mouse IgG(H+L).



1X10⁶ A431 cells were intracellularly stained with 0.4 ug Anti-Human Cytokeratin 16 (66802-1-Ig, Clone:2H4D8) and CoraLite®488-Conjugated AffiniPure Goat Anti-Mouse IgG(H+L) at dilution 1:1000 (red), or 0.4 ug Control Antibody. Cells were fixed with 4% PFA and permeabilized with Flow Cytometry Perm Buffer (PF00011-C).