

For Research Use Only

p130Cas / BCAR1 Monoclonal antibody



Catalog Number: 67215-1-Ig **2 Publications**

Basic Information

Catalog Number: 67215-1-Ig	GenBank Accession Number: BC062556	Purification Method: Protein A purification
Size: 150ul , Concentration: 2028 µg/ml by Nanodrop and 1000 µg/ml by Bradford method using BSA as the standard;	GeneID (NCBI): 9564	CloneNo.: 2D11C10
Source: Mouse	Full Name: breast cancer anti-estrogen resistance 1	Recommended Dilutions: WB 1:2000-1:10000 IHC 1:250-1:1000 IF 1:200-1:800
Isotype: IgG2a	Calculated MW: 870 aa, 93 kDa	
Immunogen Catalog Number: AG10604	Observed MW: 116 kDa	

Applications

Tested Applications:
FC, IF, IHC, WB, ELISA

Cited Applications:
IF, WB

Species Specificity:
Human

Cited Species:
human

Note-IHC: suggested antigen retrieval with TE buffer pH 9.0; (*) Alternatively, antigen retrieval may be performed with citrate buffer pH 6.0

Positive Controls:

WB : HEK-293 cells, A431 cells, HeLa cells, MCF-7 cells, T-47D cells, MDA-MB-453s cells

IHC : human breast cancer tissue, human colon cancer tissue

IF : human breast cancer tissue,

Background Information

Notable Publications

Author	Pubmed ID	Journal	Application
Tingting Hu	35360840	Front Genet	WB
Liyang Wu	34956399	Comput Math Methods Med	IF

Storage

Storage:

Store at -20°C. Stable for one year after shipment.

Storage Buffer:

PBS with 0.02% sodium azide and 50% glycerol pH 7.3.

Aliquoting is unnecessary for -20°C storage

***** 20ul sizes contain 0.1% BSA**

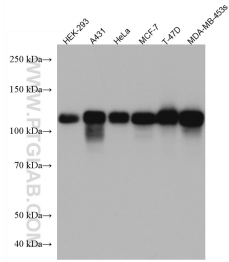
For technical support and original validation data for this product please contact:

T: 1 (888) 4PTGLAB (1-888-478-4522) (toll free in USA), or 1(312) 455-8498 (outside USA)

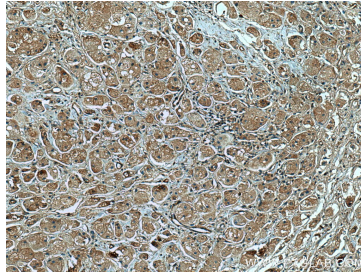
E: proteintech@ptglab.com
W: ptglab.com

This product is exclusively available under Proteintech Group brand and is not available to purchase from any other manufacturer.

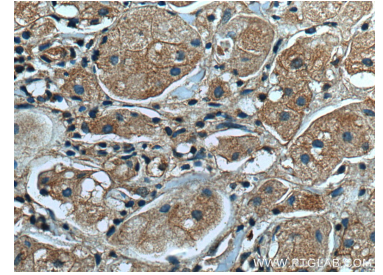
Selected Validation Data



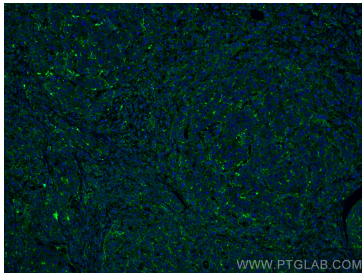
Various lysates were subjected to SDS PAGE followed by western blot with 67215-1-Ig (BCAR1 antibody) at dilution of 1:5000 incubated at room temperature for 1.5 hours.



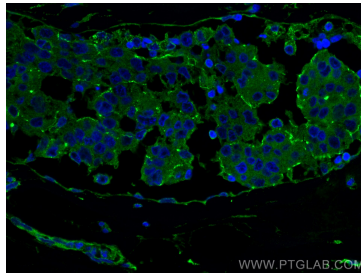
Immunohistochemical analysis of paraffin-embedded human breast cancer tissue slide using 67215-1-Ig (BCAR1 antibody) at dilution of 1:500 (under 10x lens). Heat mediated antigen retrieval with Tris-EDTA buffer (pH 9.0).



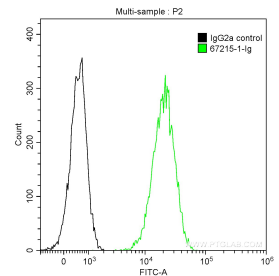
Immunohistochemical analysis of paraffin-embedded human breast cancer tissue slide using 67215-1-Ig (BCAR1 antibody) at dilution of 1:500 (under 40x lens). Heat mediated antigen retrieval with Tris-EDTA buffer (pH 9.0).



Immunofluorescent analysis of (4% PFA) fixed human breast cancer tissue using BCAR1 antibody (67215-1-Ig, Clone: 2D11C10) at dilution of 1:400 and CoraLite®488-Conjugated AffiniPure Goat Anti-Mouse IgG(H+L).



Immunofluorescent analysis of (4% PFA) fixed human breast cancer tissue using BCAR1 antibody (67215-1-Ig, Clone: 2D11C10) at dilution of 1:400 and CoraLite®488-Conjugated AffiniPure Goat Anti-Mouse IgG(H+L).



1×10^6 A431 cells were intracellularly stained with 0.2 ug Anti-Human BCAR1 (67215-1-Ig, Clone:2D11C10) and CoraLite®488-Conjugated AffiniPure Goat Anti-Mouse IgG(H+L) at dilution 1:1000 (green), and 0.2 ug Control Antibody. Cells were fixed with 90% MeOH.