

For Research Use Only

CoraLite® Plus 647 Anti-Human CD11a (TS2/4) Rabbit Recombinant Antibody



Catalog Number: **CL647-65518**

Basic Information

Catalog Number: CL647-65518	GenBank Accession Number: BC008777	Purification Method: Affinity purification
Size: 100tests , 5 µl/test	GeneID (NCBI): 3683	CloneNo.: TS2/4
Source: Rabbit	ENSEMBL Gene ID: ENSG00000005844	Excitation/Emission maxima wavelengths: 654 nm / 674 nm
Isotype: IgG	UNIPROT ID: P20701	
	Full Name: integrin, alpha L (antigen CD11A (p180), lymphocyte function-associated antigen 1; alpha polypeptide)	
	Calculated MW: 129 kDa	

Applications

Tested Applications:
FC
Species Specificity:
Human

Background Information

CD11a, also known as integrin αL or LFA-1α, is a 170-180 kDa transmembrane glycoprotein that forms a heterodimer with CD18 (PMID: 7027264; 1672643). CD11a/CD18 (LFA-1) is expressed by all leukocytes and mediates cell adhesion through interactions with its ligands, intercellular adhesion molecule 1 (ICAM-1), ICAM-2, and ICAM-3 (PMID: 7479767). CD11a/CD18 also functions in lymphocyte costimulatory signaling (PMID: 1972160).

Storage

Storage:
Store at 2-8°C. Avoid exposure to light. Stable for one year after shipment.
Storage Buffer:
PBS with 0.09% sodium azide and 0.5% BSA.

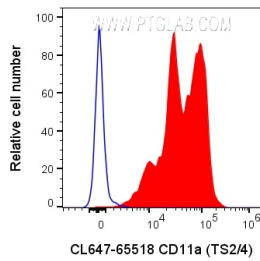
For technical support and original validation data for this product please contact:

T: 1 (888) 4PTGLAB (1-888-478-4522) (toll free in USA), or 1(312) 455-8498 (outside USA)

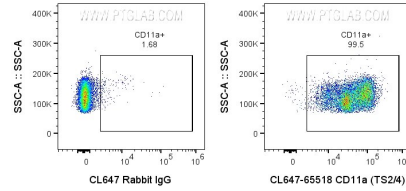
E: proteintech@ptglab.com
W: ptglab.com

This product is exclusively available under Proteintech Group brand and is not available to purchase from any other manufacturer.

Selected Validation Data



1x10⁶ human PBMCs were surface stained with 5 ul CoraLite® Plus 647 Anti-Human CD11a Rabbit Recombinant Antibody (CL647-65518, Clone:TS2/4) or CoraLite® Plus 647-conjugated Rabbit IgG control PolyAb (CL647-30000). Cells were not fixed. Lymphocytes were gated.



1x10⁶ human PBMCs were surface stained with 5 ul CoraLite® Plus 647 Anti-Human CD11a Rabbit Recombinant Antibody (CL647-65518, Clone:TS2/4) or CoraLite® Plus 647-conjugated Rabbit IgG control PolyAb (CL647-30000). Cells were not fixed. Lymphocytes were gated.