

For Research Use Only

CoraLite® Plus 647 Anti-Human CD107b / LAMP2 (H4B4) Rabbit IgG Recombinant Antibody



Catalog Number: **CL647-65520**

Basic Information

| | | |
|---------------------------------------|--|---|
| Catalog Number: CL647-65520 | GenBank Accession Number: BC002965 | Purification Method: Affinity purification |
| Size: 100tests , 5 µl/test | GeneID (NCBI): 3920 | CloneNo.: H4B4 |
| Source: Rabbit | ENSEMBL Gene ID: ENSG00000005893 | Excitation/Emission maxima wavelengths: 654 nm / 674 nm |
| Isotype: IgG | Full Name: lysosomal-associated membrane protein 2 | |
| | Calculated MW: 45 kDa | |

Applications

Tested Applications:
FC (Intra)

Species Specificity:
Human

Background Information

LAMP2 (CD107b) is a Lysosomal membrane glycoprotein. LAMP2 is extensively glycosylated with asparagine-linked oligosaccharides which protect it from intracellular proteolysis (PMID: 10521503). Although LAMP-2 is localized primarily in the endosome-lysosomal membrane of cells, it is also found on the plasma membrane under certain circumstances, e.g., after platelet activation, during granulocytic differentiation and activation, and in some tumor cells (PMID: 12221139). LAMP is involved in lysosomal stability and autophagy (PMID: 12221139). This glycoprotein provides selectins with carbohydrate ligands. LAMP2 may play a role in tumor cell metastasis (PMID 9426697).

Storage

Storage:
Store at 2-8°C. Avoid exposure to light. Stable for one year after shipment.

Storage Buffer:
PBS with 0.09% sodium azide and 0.5% BSA.

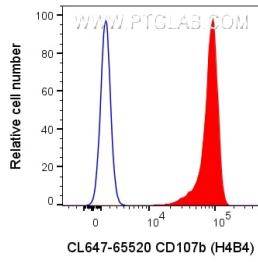
For technical support and original validation data for this product please contact:

T: 1 (888) 4PTGLAB (1-888-478-4522) (toll free in USA), or 1(312) 455-8498 (outside USA)

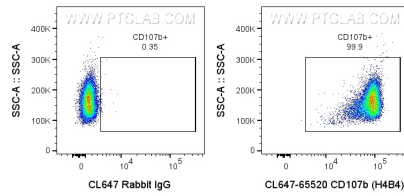
E: proteintech@ptglab.com
W: ptglab.com

This product is exclusively available under Proteintech Group brand and is not available to purchase from any other manufacturer.

Selected Validation Data



1x10⁶ human PBMCs were intracellularly stained with 5 ul CoraLite® Plus 647 Anti-Human CD107b Rabbit Recombinant Antibody (CL647-65520, Clone:H4B4) or CoraLite® Plus 647-conjugated Rabbit IgG control PolyAb (CL647-30000). Cells were fixed and permeabilized with Transcription Factor Staining Buffer Kit (PF00011). Cells were treated with FC Receptor Block prior to staining.



1x10⁶ human PBMCs were intracellularly stained with 5 ul CoraLite® Plus 647 Anti-Human CD107b Rabbit Recombinant Antibody (CL647-65520, Clone:H4B4) or CoraLite® Plus 647-conjugated Rabbit IgG control PolyAb (CL647-30000). Cells were fixed and permeabilized with Transcription Factor Staining Buffer Kit (PF00011). Cells were treated with FC Receptor Block prior to staining.