

IHC*easy* ERK1/2 Ready-To-Use IHC Kit

Catalog Number: **KHC0917**

General Information

Sample type:
FFPE tissue

Cited sample type:

Reactivity:
Human, Mouse, Rat

Cited Reactivity:

Assay type:
Immunohistochemistry

Primary antibody type:
Rabbit Polyclonal

Secondary antibody type:
Polymer-HRP-Goat anti-Rabbit

Kit Component

Component	Size	Concentration
Antigen Retrieval Buffer	100 mL	50×
Washing Buffer	100 mL × 2	20×
Blocking Buffer	5 mL	RTU
Primary Antibody	5 mL	RTU
Secondary Antibody	5 mL	RTU
Chromogen Component A	0.2 mL	RTU
Chromogen Component B	4 mL	RTU
Signal Enhancer	5 mL	RTU
Counter Staining Reagent	5 mL	RTU
Mounting Media	5 mL	RTU
Control Slide	1 slide (Optional)	FFPE
Datasheet	1 Copy	
Manual	1 Copy	

Storage Instructions

All the reagents are stored at 2-8°C. The kit is stable for 6 months from the date of receipt.

Background

ERK1 and ERK2 belongs to the protein kinase superfamily. It is involved in both the initiation and regulation of meiosis, mitosis, and postmitotic functions in differentiated cells by phosphorylating a number of transcription factors such as ELK-1. ERK1/2 catalyzed the reaction: ATP + a protein = ADP + a phosphoprotein. It is activated by tyrosine phosphorylation in response to INS and NGF. Primary antibody in this kit can recognize both ERK1 and ERK2.

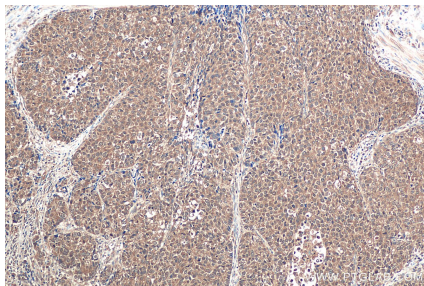
Synonyms

ERK, ERK 2, ERK1/2, ERK2, ERT1, MAP kinase 1, MAP kinase 2, MAP kinase isoform p42, MAPK 1, MAPK 2, MAPK1, MAPK2, p40, p41, p41mapk, p42 MAPK, P42MAPK, PRKM1, PRKM2

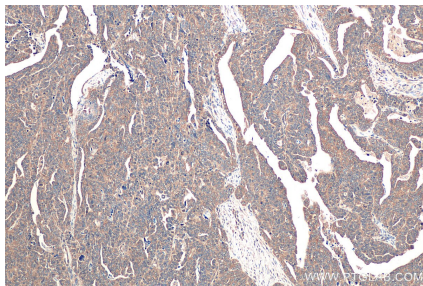
For technical support and original validation data for this product please contact:
T: 1 (888) 4PTGLAB (1-888-478-4522) (toll free in USA), or 1(312) 455-8498 (outside USA)
E: proteintech@ptglab.com
W: ptglab.com

This product is exclusively available under Proteintech Group brand and is not available to purchase from any other manufacturer.

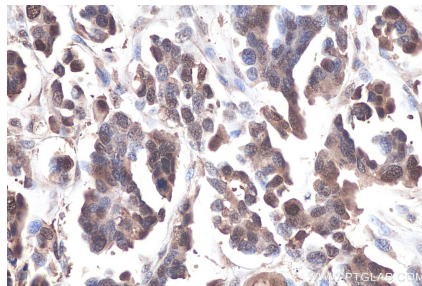
Selected Validation Data



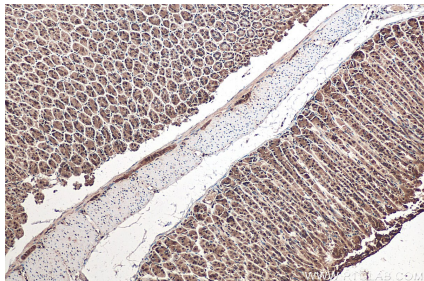
Immunohistochemical analysis of paraffin-embedded human stomach cancer tissue slide using KHC0917 (ERK1/2 IHC Kit).



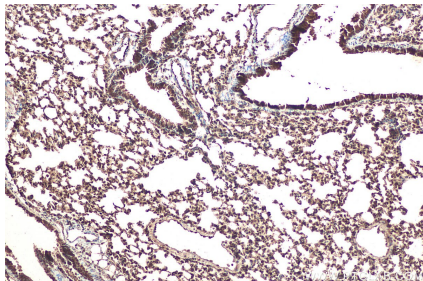
Immunohistochemical analysis of paraffin-embedded human ovary tumor tissue slide using KHC0917 (ERK1/2 IHC Kit).



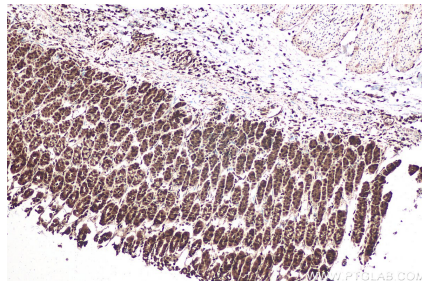
Immunohistochemical analysis of paraffin-embedded human colon cancer tissue slide using KHC0917 (ERK1/2 IHC Kit).



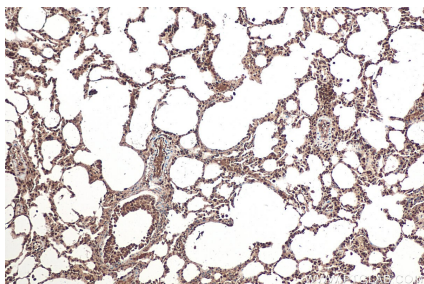
Immunohistochemical analysis of paraffin-embedded mouse stomach tissue slide using KHC0917 (ERK1/2 IHC Kit).



Immunohistochemical analysis of paraffin-embedded mouse lung tissue slide using KHC0917 (ERK1/2 IHC Kit).



Immunohistochemical analysis of paraffin-embedded rat stomach tissue slide using KHC0917 (ERK1/2 IHC Kit).



Immunohistochemical analysis of paraffin-embedded rat lung tissue slide using KHC0917 (ERK1/2 IHC Kit).