

IHC*easy* ATOX1 Ready-To-Use IHC Kit

Catalog Number: **KHC0932**

General Information

Sample type:
FFPE tissue

Cited sample type:

Reactivity:
Human, Mouse, Rat

Cited Reactivity:

Assay type:
Immunohistochemistry

Primary antibody type:
Rabbit Polyclonal

Secondary antibody type:
Polymer-HRP-Goat anti-Rabbit

Kit Component

Component	Size	Concentration
Antigen Retrieval Buffer	100 mL	50×
Washing Buffer	100 mL ×2	20×
Blocking Buffer	5 mL	RTU
Primary Antibody	5 mL	RTU
Secondary Antibody	5 mL	RTU
Chromogen Component A	0.2 mL	RTU
Chromogen Component B	4 mL	RTU
Signal Enhancer	5 mL	RTU
Counter Staining Reagent	5 mL	RTU
Mounting Media	5 mL	RTU
Control Slide	1 slide (Optional)	FFPE
Datasheet	1 Copy	
Manual	1 Copy	

Storage Instructions

All the reagents are stored at 2-8°C. The kit is stable for 6 months from the date of receipt.

Background

Antioxidant 1 (ATOX1) is a copper chaperone to regulate copper homeostasis in cell. In the cytosol, ATOX1 always binds to copper and transfer to ATPase proteins in the trans-Golgi network, thereby promoting copper supply to various copper-dependent oxidoreductases matured within the secretory vesicles. Also, the protein could protect cells against oxidative damage and the expression levels of ATOX1 may help to the inflammatory response and antioxidant defense, even to modulate response to the cancer. ATOX1 plays an important role in the physiology of the human central nervous system, and it's highly expressed in the cerebral cortex and hippocampus. Either cytosol or nucleus location of ATOX1 has been reported in different literatures, which may be associated with cell status.

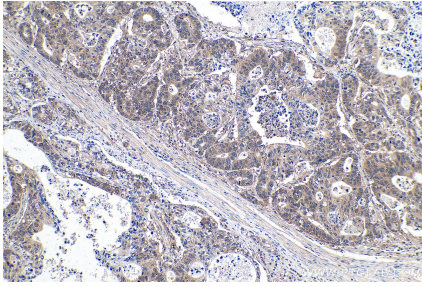
Synonyms

ATOX1, ATX1, Copper transport protein ATOX1, HAH1, Metal transport protein ATX1

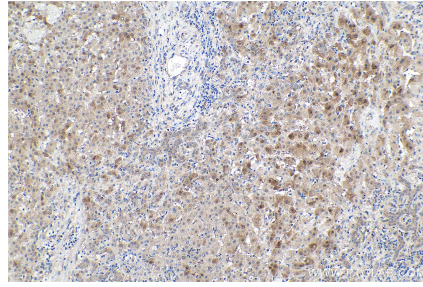
For technical support and original validation data for this product please contact:
T: 1 (888) 4PTGLAB (1-888-478-4522) (toll free in USA), or 1(312) 455-8498 (outside USA)
E: proteintech@ptglab.com
W: ptglab.com

This product is exclusively available under Proteintech Group brand and is not available to purchase from any other manufacturer.

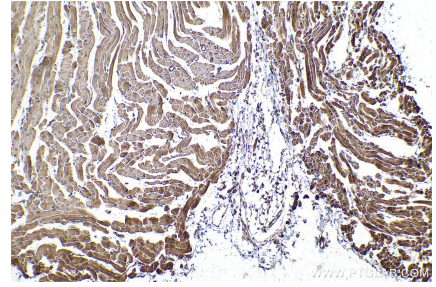
Selected Validation Data



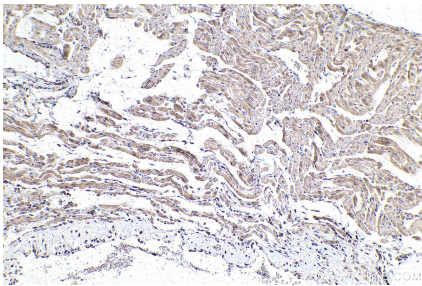
Immunohistochemical analysis of paraffin-embedded human stomach cancer tissue slide using KHC0932 (ATOX1 IHC Kit).



Immunohistochemical analysis of paraffin-embedded human liver cancer tissue slide using KHC0932 (ATOX1 IHC Kit).



Immunohistochemical analysis of paraffin-embedded mouse heart tissue slide using KHC0932 (ATOX1 IHC Kit).



Immunohistochemical analysis of paraffin-embedded rat heart tissue slide using KHC0932 (ATOX1 IHC Kit).