

IHC*easy* LC3A/B Ready-To-Use IHC Kit

Catalog Number: **KHC0939**

General Information

Sample type:
FFPE tissue

Cited sample type:

Reactivity:
Human, Mouse

Cited Reactivity:

Assay type:
Immunohistochemistry

Primary antibody type:
Mouse Monoclonal

Secondary antibody type:
Polymer-HRP-Goat anti-Mouse

Kit Component

Component	Size	Concentration
Antigen Retrieval Buffer	100 mL	50×
Washing Buffer	100 mL ×2	20×
Blocking Buffer	5 mL	RTU
Primary Antibody	5 mL	RTU
Secondary Antibody	5 mL	RTU
Chromogen Component A	0.2 mL	RTU
Chromogen Component B	4 mL	RTU
Signal Enhancer	5 mL	RTU
Counter Staining Reagent	5 mL	RTU
Mounting Media	5 mL	RTU
Control Slide	1 slide (Optional)	FFPE
Datasheet	1 Copy	
Manual	1 Copy	

Storage Instructions

All the reagents are stored at 2-8°C. The kit is stable for 6 months from the date of receipt.

Background

LC3, also known as microtubule-associated protein 1 light chain 3 (MAP1LC3), is a mammalian homolog of the yeast Atg8p (autophagy-related 8 protein) that is involved in autophagy process. Three isoforms of LC3 exist as LC3A, LC3B, and LC3C. LC3 is first synthesized as pro-LC3, and undergoes C-terminal cleavage to yield a cytosolic precursor known as LC3-I. During autophagy LC3-I is subsequently conjugated to PE lipid as lipidated form: LC3-II. The lipidated form migrates faster on SDS-PAGE gel. The increased level of LC3-II has been widely used as autophagy marker. Primary antibody in this kit recognizes both LC3-I and LC3-II.

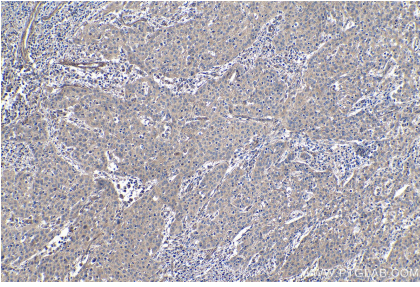
Synonyms

LC3, LC3A, LC3A/B, LC3B, LC3-II, MAP1A/MAP1B LC3 A, MAP1A/MAP1B light chain 3 A, MAP1ALC3, MAP1BLC3, MAP1LC3A, MAP1LC3A/B, MAP1LC3B

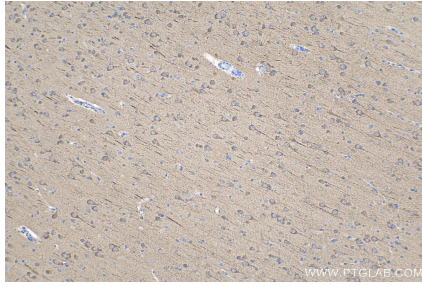
For technical support and original validation data for this product please contact:
T: 1 (888) 4PTGLAB (1-888-478-4522) (toll free in USA), or 1(312) 455-8498 (outside USA)
E: proteintech@ptglab.com
W: ptglab.com

This product is exclusively available under Proteintech Group brand and is not available to purchase from any other manufacturer.

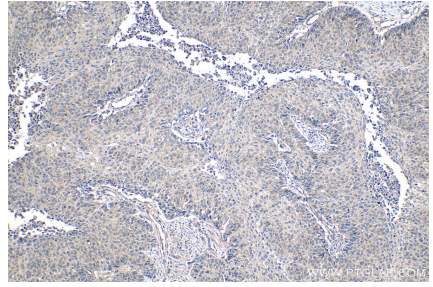
Selected Validation Data



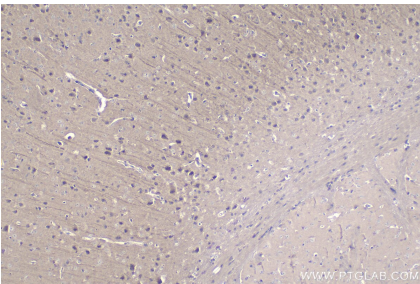
Immunohistochemical analysis of paraffin-embedded human cervical cancer tissue slide using KHC0939 (LC3A/B IHC Kit).



Immunohistochemical analysis of paraffin-embedded human gliomas tissue slide using KHC0939 (LC3A/B IHC Kit).



Immunohistochemical analysis of paraffin-embedded human lung cancer tissue slide using KHC0939 (LC3A/B IHC Kit).



Immunohistochemical analysis of paraffin-embedded mouse brain tissue slide using KHC0939 (LC3A/B IHC Kit).