

IHC*easy* LC3 Ready-To-Use IHC Kit

Catalog Number: **KHC0940**

General Information

Sample type:
FFPE tissue

Cited sample type:

Reactivity:
Human, Mouse

Cited Reactivity:

Assay type:
Immunohistochemistry

Primary antibody type:
Rabbit Polyclonal

Secondary antibody type:
Polymer-HRP-Goat anti-Rabbit

Kit Component

Component	Size	Concentration
Antigen Retrieval Buffer	100 mL	50×
Washing Buffer	100 mL ×2	20×
Blocking Buffer	5 mL	RTU
Primary Antibody	5 mL	RTU
Secondary Antibody	5 mL	RTU
Chromogen Component A	0.2 mL	RTU
Chromogen Component B	4 mL	RTU
Signal Enhancer	5 mL	RTU
Counter Staining Reagent	5 mL	RTU
Mounting Media	5 mL	RTU
Control Slide	1 slide (Optional)	FFPE
Datasheet	1 Copy	
Manual	1 Copy	

Storage Instructions

All the reagents are stored at 2-8°C. The kit is stable for 6 months from the date of receipt.

Background

Map1LC3, also known as LC3, is the human homolog of yeast Atg8 and is involved in the formation of autophagosomal vacuoles, called autophagosomes. Three human Map1LC3 isoforms, MAP1LC3A, MAP1LC3B, and MAP1LC3C, undergo post-translational modifications during autophagy. And they differ in their post-translational modifications during autophagy. Map1LC3 also exists in two modified forms, an cytoplasmic form that was originally identified as a subunit of the microtubule-associated protein 1, and a form that is associated with the autophagosome membrane. Primary antibody in this kit can cross react with MAP1LC3A, MAP1LC3B, and MAP1LC3C.

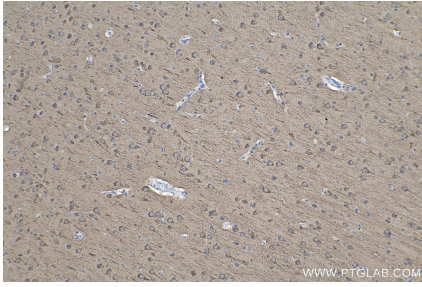
Synonyms

LC3, LC3B, LC3-II, MAP1A/1BLC3, MAP1A/MAP1B LC3 B, MAP1A/MAP1B light chain 3 B, MAP1ALC3, MAP1LC3B

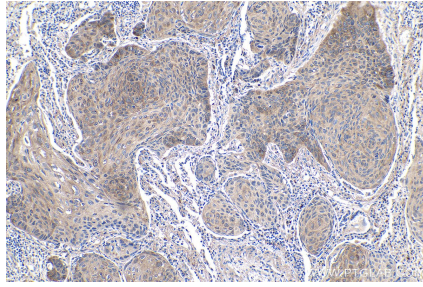
For technical support and original validation data for this product please contact:
T: 1 (888) 4PTGLAB (1-888-478-4522) (toll free in USA), or 1(312) 455-8498 (outside USA)
E: proteintech@ptglab.com
W: ptglab.com

This product is exclusively available under Proteintech Group brand and is not available to purchase from any other manufacturer.

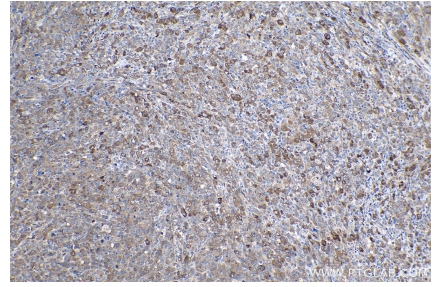
Selected Validation Data



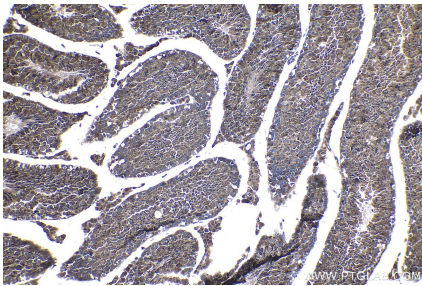
Immunohistochemical analysis of paraffin-embedded human gliomas tissue slide using KHC0940 (LC3 IHC Kit).



Immunohistochemical analysis of paraffin-embedded human lung cancer tissue slide using KHC0940 (LC3 IHC Kit).



Immunohistochemical analysis of paraffin-embedded human lymphoma tissue slide using KHC0940 (LC3 IHC Kit).



Immunohistochemical analysis of paraffin-embedded mouse testis tissue slide using KHC0940 (LC3 IHC Kit).