

# IHC*easy* EIF4EBP1 Ready-To-Use IHC Kit

Catalog Number: **KHC0973**

## General Information

**Sample type:**  
FFPE tissue

**Cited sample type:**

**Reactivity:**  
Human, Mouse, Rat

**Cited Reactivity:**

**Assay type:**  
Immunohistochemistry

**Primary antibody type:**  
Mouse Monoclonal

**Secondary antibody type:**  
Polymer-HRP-Goat anti-Mouse

## Kit Component

Component	Size	Concentration
Antigen Retrieval Buffer	100 mL	50×
Washing Buffer	100 mL × 2	20×
Blocking Buffer	5 mL	RTU
Primary Antibody	5 mL	RTU
Secondary Antibody	5 mL	RTU
Chromogen Component A	0.2 mL	RTU
Chromogen Component B	4 mL	RTU
Signal Enhancer	5 mL	RTU
Counter Staining Reagent	5 mL	RTU
Mounting Media	5 mL	RTU
Control Slide	1 slide (Optional)	FFPE
Datasheet	1 Copy	
Manual	1 Copy	

## Storage Instructions

All the reagents are stored at 2-8°C. The kit is stable for 6 months from the date of receipt.

## Background

Eukaryotic translation initiation factor 4E-binding protein 1(4EBP1), is a member of 4EBPs family, which regulate the translation of a subset of mRNA by competing with eIF4G for binding to eIF4E, thus preventing the assembly of the eIF4F complex. The eIF4F facilitates the recruitment of other translation initiation factors to form the complex and then initiates cap-dependent translation. 4EBP1 also mediates the regulation of protein translation by growth factors, hormones and other stimuli that signal through the MAP kinase and mTORC1 pathways. There are three forms of 4EBP1, alpha, beta and gamma.

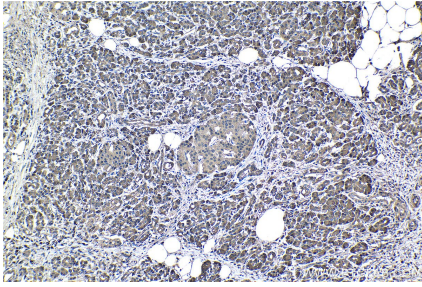
## Synonyms

4E BP1, 4EBP1, BP 1, eIF4E binding protein 1, EIF4EBP1, PHAS I

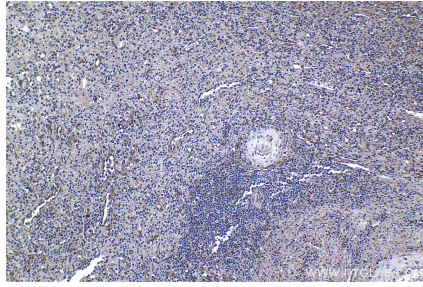
For technical support and original validation data for this product please contact:  
T: 1 (888) 4PTGLAB (1-888-478-4522) (toll free in USA), or 1(312) 455-8498 (outside USA)  
E: [proteintech@ptglab.com](mailto:proteintech@ptglab.com)  
W: [ptglab.com](http://ptglab.com)

This product is exclusively available under Proteintech Group brand and is not available to purchase from any other manufacturer.

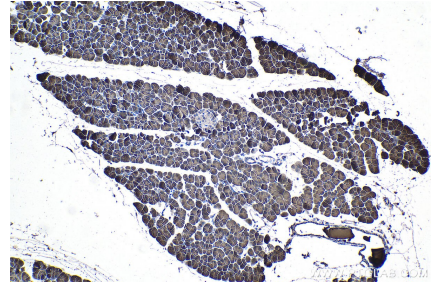
## Selected Validation Data



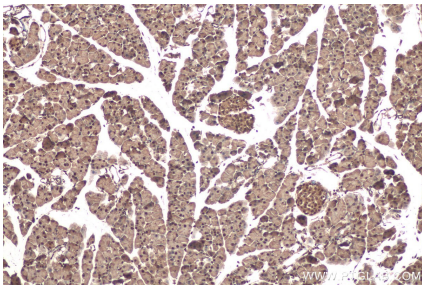
Immunohistochemical analysis of paraffin-embedded human pancreas cancer tissue slide using KHC0973 (EIF4EBP1 IHC Kit).



Immunohistochemical analysis of paraffin-embedded human colon cancer tissue slide using KHC0973 (EIF4EBP1 IHC Kit).



Immunohistochemical analysis of paraffin-embedded rat pancreas tissue slide using KHC0973 (EIF4EBP1 IHC Kit).



Immunohistochemical analysis of paraffin-embedded mouse pancreas tissue slide using KHC0973 (EIF4EBP1 IHC Kit).