

IHC*easy* SFTPB Ready-To-Use IHC Kit

Catalog Number: **KHC1099**

General Information

Sample type:
FFPE tissue
Cited sample type:
Reactivity:
Human
Cited Reactivity:

Assay type:
Immunohistochemistry
Primary antibody type:
Rabbit Polyclonal
Secondary antibody type:
Polymer-HRP-Goat anti-Rabbit

Kit Component

Component	Size	Concentration
Antigen Retrieval Buffer	100 mL	50×
Washing Buffer	100 mL ×2	20×
Blocking Buffer	5 mL	RTU
Primary Antibody	5 mL	RTU
Secondary Antibody	5 mL	RTU
Chromogen Component A	0.2 mL	RTU
Chromogen Component B	4 mL	RTU
Signal Enhancer	5 mL	RTU
Counter Staining Reagent	5 mL	RTU
Mounting Media	5 mL	RTU
Control Slide	1 slide (Optional)	FFPE
Datasheet	1 Copy	
Manual	1 Copy	

Storage Instructions

All the reagents are stored at 2-8°C. The kit is stable for 6 months from the date of receipt.

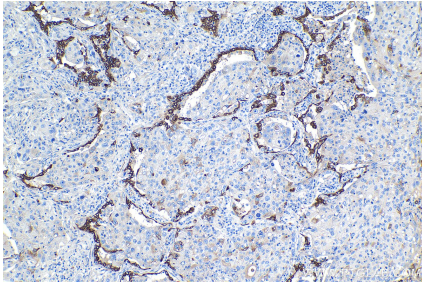
Background

Pulmonary surfactant-associated protein B(SFTPB) also named SFTP3, is a hydrophobic peptide that facilitates the formation and maintenance of a phospholipid-rich film at the alveolar air-liquid interface. SP-B is necessary for postnatal lung function. SFTPB as a risk biomarker for lung cancer.

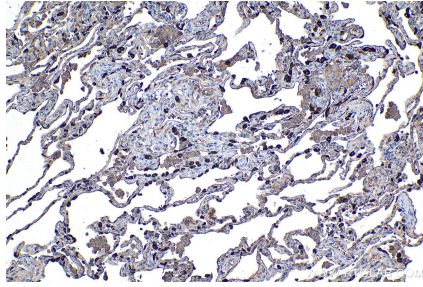
Synonyms

6 kDa protein, PSP B, SFTB3, SFTP3, SFTPB, SMDP1, SP B, surfactant protein B

Selected Validation Data



Immunohistochemical analysis of paraffin-embedded human lung cancer tissue slide using KHC1099 (SFTPB IHC Kit).



Immunohistochemical analysis of paraffin-embedded human lung tissue slide using KHC1099 (SFTPB IHC Kit).