

IHC*easy* CUGBP2 Ready-To-Use IHC Kit

Catalog Number: **KHC1121**

General Information

Sample type:
FFPE tissue

Cited sample type:

Reactivity:
Human, Mouse, Rat

Cited Reactivity:

Assay type:
Immunohistochemistry

Primary antibody type:
Rabbit Polyclonal

Secondary antibody type:
Polymer-HRP-Goat anti-Rabbit

Kit Component

Component	Size	Concentration
Antigen Retrieval Buffer	100 mL	50×
Washing Buffer	100 mL ×2	20×
Blocking Buffer	5 mL	RTU
Primary Antibody	5 mL	RTU
Secondary Antibody	5 mL	RTU
Chromogen Component A	0.2 mL	RTU
Chromogen Component B	4 mL	RTU
Signal Enhancer	5 mL	RTU
Counter Staining Reagent	5 mL	RTU
Mounting Media	5 mL	RTU
Control Slide	1 slide (Optional)	FFPE
Datasheet	1 Copy	
Manual	1 Copy	

Storage Instructions

All the reagents are stored at 2-8°C. The kit is stable for 6 months from the date of receipt.

Background

The CELF (CUGBP and ETR-3 Like Factor)/Bruno-like protein family plays important roles in the regulation of alternative splicing and translation. CUGBP2 is a member of this family of proteins that possesses several alternatively spliced exons. CUGBP2 induces smooth muscle-specific exon inclusion via binding to uridine purine repeat elements (URE) in ACTN1. Although CUGBP2 is known as a splicing activator for the N-methyl-D-aspartate receptor 1 (NMDA R1) exon 21, CUGBP2 represses NMDA R1 exon 5 inclusion. In addition, CUGBP2 was reported to repress the inclusion of the I_r exon 11.

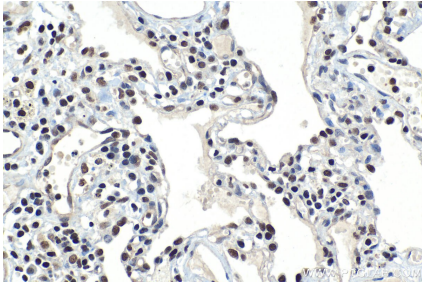
Synonyms

Bruno like protein 3, BRUNOL3, CELF 2, CELF2, CUG BP2, CUGBP2, ETR 3, ETR3, hNAPOR, NAPOR, RNA binding protein BRUNOL 3

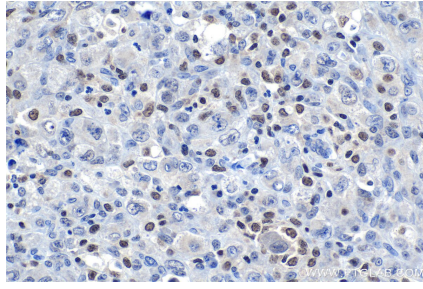
For technical support and original validation data for this product please contact:
T: 1 (888) 4PTGLAB (1-888-478-4522) (toll free in USA), or 1(312) 455-8498 (outside USA)
E: proteintech@ptglab.com
W: ptglab.com

This product is exclusively available under Proteintech Group brand and is not available to purchase from any other manufacturer.

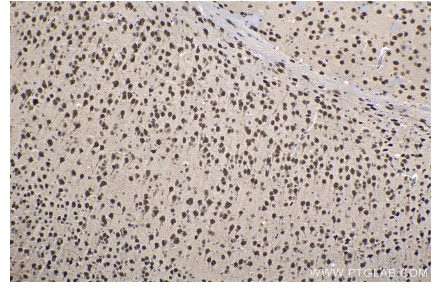
Selected Validation Data



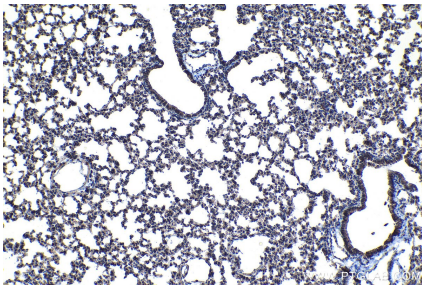
Immunohistochemical analysis of paraffin-embedded human lung cancer (ANCT) tissue slide using KHC1121 (CUGBP2 IHC Kit).



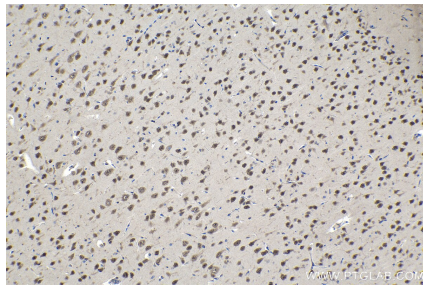
Immunohistochemical analysis of paraffin-embedded human lymphoma tissue slide using KHC1121 (CUGBP2 IHC Kit).



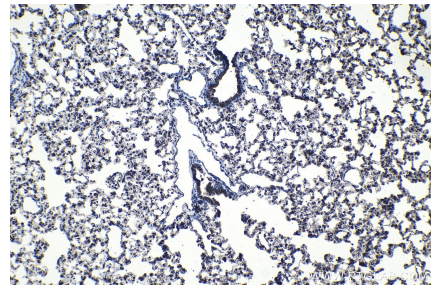
Immunohistochemical analysis of paraffin-embedded mouse brain tissue slide using KHC1121 (CUGBP2 IHC Kit).



Immunohistochemical analysis of paraffin-embedded mouse lung tissue slide using KHC1121 (CUGBP2 IHC Kit).



Immunohistochemical analysis of paraffin-embedded rat brain tissue slide using KHC1121 (CUGBP2 IHC Kit).



Immunohistochemical analysis of paraffin-embedded rat lung tissue slide using KHC1121 (CUGBP2 IHC Kit).