

IHC*easy* Ceruloplasmin/CP Ready-To-Use IHC Kit

Catalog Number: **KHC1122**

General Information

Sample type:
FFPE tissue
Cited sample type:
Reactivity:
Human, Mouse
Cited Reactivity:

Assay type:
Immunohistochemistry
Primary antibody type:
Mouse Monoclonal
Secondary antibody type:
Polymer-HRP-Goat anti-Mouse

Kit Component

| Component | Size | Concentration |
|--------------------------|--------------------|---------------|
| Antigen Retrieval Buffer | 100 mL | 50× |
| Washing Buffer | 100 mL ×2 | 20× |
| Blocking Buffer | 5 mL | RTU |
| Primary Antibody | 5 mL | RTU |
| Secondary Antibody | 5 mL | RTU |
| Chromogen Component A | 0.2 mL | RTU |
| Chromogen Component B | 4 mL | RTU |
| Signal Enhancer | 5 mL | RTU |
| Counter Staining Reagent | 5 mL | RTU |
| Mounting Media | 5 mL | RTU |
| Control Slide | 1 slide (Optional) | FFPE |
| Datasheet | 1 Copy | |
| Manual | 1 Copy | |

Storage Instructions

All the reagents are stored at 2-8°C. The kit is stable for 6 months from the date of receipt.

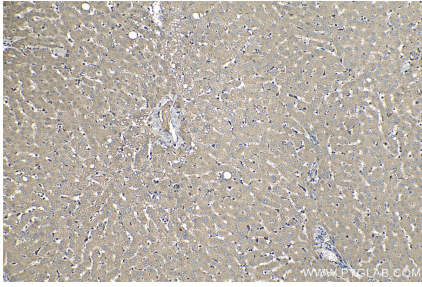
Background

Ceruloplasmin (CP) is a serum glycoprotein synthesized by hepatocytes and functions as the major transport protein of copper in blood where it acts as ferroxidase and is required for iron transport of transferrin.

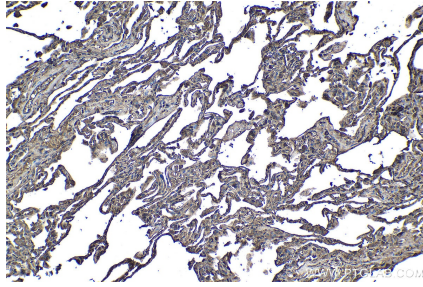
Synonyms

Ceruloplasmin, ceruloplasmin (ferroxidase), CP, CP 2, Ferroxidase

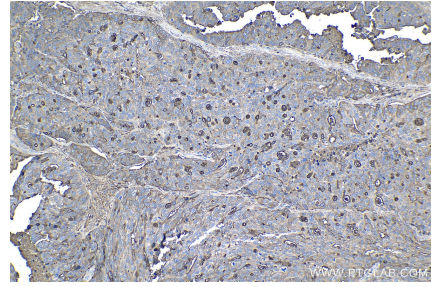
Selected Validation Data



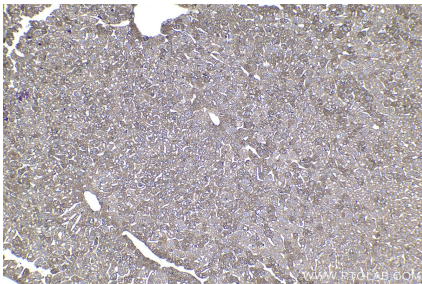
Immunohistochemical analysis of paraffin-embedded human liver tissue slide using KHC1122 (Ceruloplasmin/CP IHC Kit).



Immunohistochemical analysis of paraffin-embedded human lung tissue slide using KHC1122 (Ceruloplasmin/CP IHC Kit).



Immunohistochemical analysis of paraffin-embedded human ovary tumor tissue slide using KHC1122 (Ceruloplasmin/CP IHC Kit).



Immunohistochemical analysis of paraffin-embedded mouse liver tissue slide using KHC1122 (Ceruloplasmin/CP IHC Kit).